



datasmartELD™

Quick Start Guide

datasmart4trucks.com

ELD • Video • Track • Truck Management

INSTALLATION TIPS

This tip sheet contains instructions on connecting your EBM to your Tablet and the datasmart ELD app. Once connected check the Quick Reference Guide for any troubleshooting needs.

If it takes longer than 30 seconds to connect to your EBM, try turning your Bluetooth off and then back on and attempt to reconnect.

In order to certify and send logs, you will need to set up an email account on your device. To do this, select “apps” from the home screen, then tap on “email” or “gmail” and follow the prompts. If you do not have an email address, a gmail account can be created for free by visiting www.gmail.com.

To download the ELD app, look for us in the google play store, or under Settings go to Apps, select Browser then enter:

http://developer.vistracks.com/com_datasmarteld_com.html

If using this method, you will need allow your device to install apps from “Unknown Sources”. This selection is found under Security in the Settings tab.

Update your Datasmart ELD™ software by visiting the Google Play store and download the app. Always log out when done using the ELD app so it’s doesn’t continue to log while not in use.

The sticker included in your kit is to be placed on the outside of the vehicle next to the driver’s door to show your vehicle’s ELD compliance.

YOUR SALES REPS ARE:

Jim Williams

PHONE: (281) 907-2696

E-MAIL: j.williams@datasmart4trucks.com

Randy Young

PHONE: (203) 788-5147

E-MAIL: r.young@datasmart4trucks.com

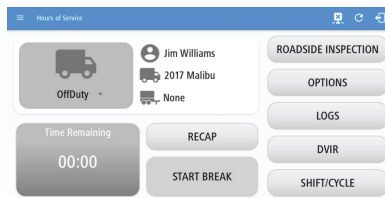
How to connect the Datasmart ELD™ DOT HOS application to BTLE Engine Bus Monitors with Android Tablets.

Shown in these screen shots is the TomTom BRIDGE with the Geometris WhereQube Series 87.

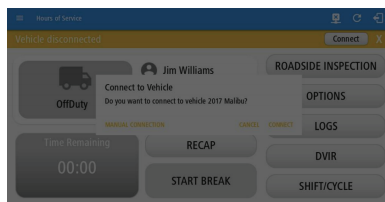
First Log in to the app with your user name and password



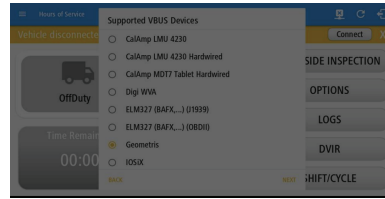
Next, check the status icon at the top right. If you see an “X” the Engine Bus Monitor is not connected. Be sure the hardware is plugged into the diagnostic port of the truck.



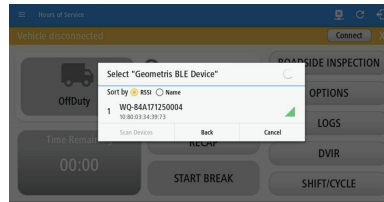
Touch the “X” to begin the application connection process. Either an automatic or a manual connection process is fine but sometimes a manual connection is a little faster.



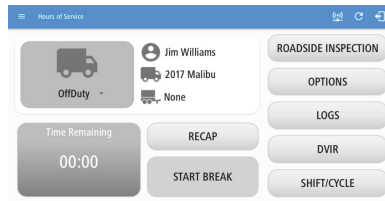
If you choose a manual connection, or you are connecting for the first time, you may see a list of hardware supported by the Datasmart ELD™ App. Choose the device type from the menu that you have installed on the truck.



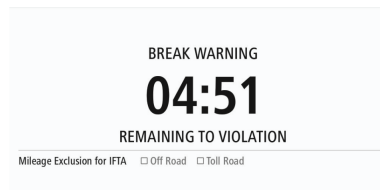
The Serial number of the Geometris device is displayed in this case along with the signal strength “RSSSI” of the BTLE radio. Sorting by signal strength is helpful if many trucks with the same hardware are parked closely together in a carrier’s yard. Touch the serial number to select that unit.



You will hear an audible chime when the Geometris connect to the Datasmart ELD™ software. The radio tower icon is used to show that the device is connected.



Manually change your status to On Duty Not Driving, perform a DVIR inspection, certify any previous logs and email the results. Now you are ready to drive and the vehicle screen will switch to drive time remaining after you exceed 5 MPH.



1

Logging on

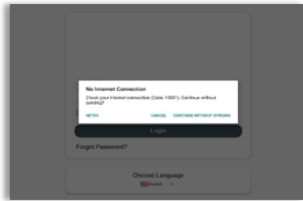


Enter username and password and select the Login button, your logs will then be pulled through to the device. Logging into the app for the first time will display the Select Equipment dialog. It will continue to display until the user chooses a specified vehicle and trailer(s) to use. User can select option 'None' to use the app without selecting a vehicle.

Note:

- App will automatically attempt a VBUS connection with the device that is associated to the selected vehicle.
- For the iOS app, drivers from a different account can log into the app

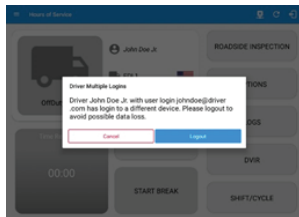
(a) Logging in to the device that has no internet connection, the driver can login successfully to the app only if driver have logged in to the device before. Tap 'Continue without syncing' button to login.



(b) Logging into the app when app server is down will prompt a dialog stating, 'Unable to Communicate with HOS server. Check your internet connection'.

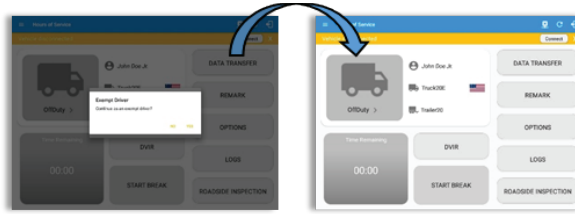
(c) Logging in deactivated or deleted driver cannot proceed on logging in to the app instead an error prompt will display stating that, 'Driver has been deactivated. Please contact your service provider. / The account you belong has been deactivated. Please contact your service provider.'

(d) Logging in on a second device will cause this message to be displayed on the first device: Driver Multiple Session. 'Driver <driver email> has login to a different device. Please logout to avoid possible data loss.'



Tapping the Cancel button will only dismiss the dialog and Tapping Logout will automatically log out the driver's account from the device. Logging out from the device is advised, to avoid data loss caused by **multiple logins**.

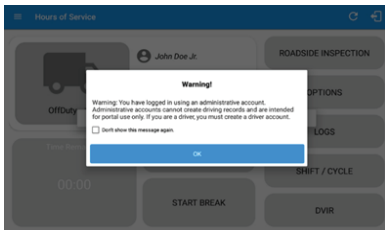
1 Logging On- Continued



If the Driver is an **Exempt Driver** or a driver that operates under the short-haul exemption (**395.1 (e)**), upon logging in a dialog will display confirming whether the driver chooses to continue as an exempt driver. By selecting the OK button, the “No Logs for Non-CDL-Driver Short-Haul Drivers operating within 150 air-miles” exception will be enabled.

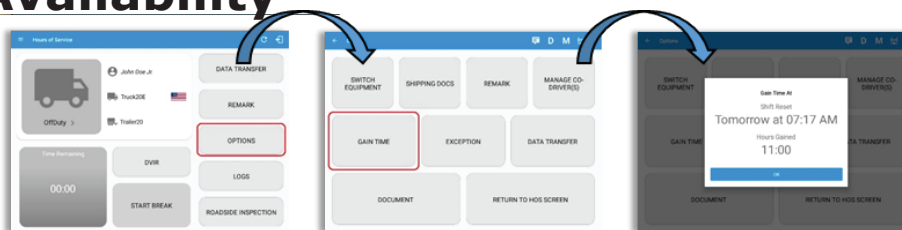
Note: The Connection bar which appears below the application header, only displays when the vehicle is disconnected to the device. Yet, it can be removed if the close button is tapped.

If the driver logged into the application without the Location Services turned on, a snackbar will display on the main dashboard and to other screens except for the screens navigated through the Settings menu. However, when the Location Services of the device is enabled then the snackbar will no longer display.



If an administrative user logged into the application this warning dialog displays. An admin account is intended to be used on the portal only.

2 Check Availability



Before setting your initial status, you should first check that you have availability, select the Options button and then select the Gain Time button.

3

Vehicle/Trailer



- To switch Vehicle or Trailer, select the Vehicle/Trailer option from within the Options screen, this will display the current Vehicle and Trailer.
- Switch Equipment by tapping the vehicle or trailer icon on the dashboard.
- Vehicles and Trailers can also be filtered through text entry on the vehicle/trailer text fields.
- Switching or selecting a Vehicle with a preconfigured VBUS device enables the app to find and connect on the match device.

Note: On the VBUS Settings, VBUS Data and Automatic Configuration should be enabled.

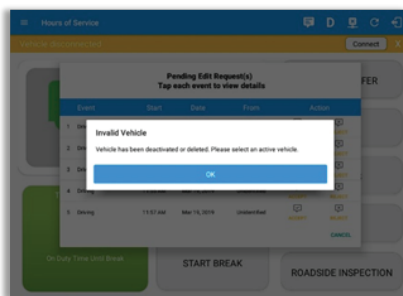
- Switching or selecting a Vehicle that has been deactivated or deleted by the personnel on portal will prompt a dialog, '**Invalid Vehicle**' which states that 'Vehicle has been deactivated or deleted. Please select an active vehicle'.
- A remark is recorded on event history list after successfully switching vehicle, attaching trailer(s) and detaching trailer(s).

Examples:

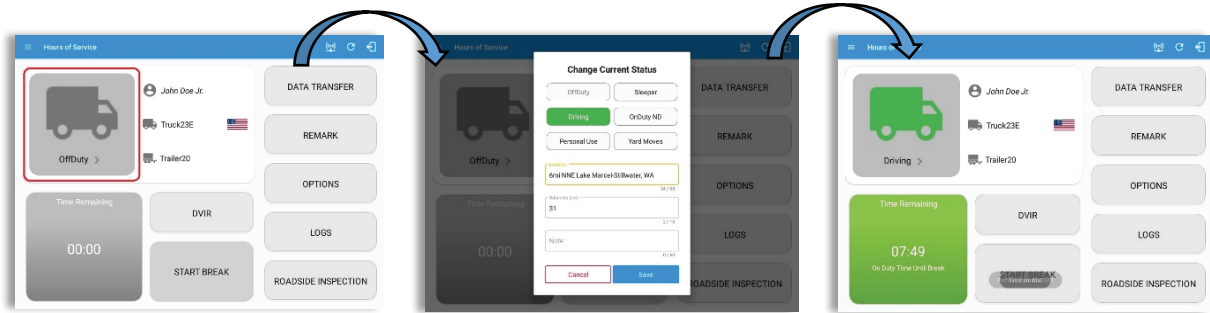
Switched vehicle <vehicle name> to vehicle <vehicle name>;

Attached Trailer(s) <trailer name or trailer names separated by comma>;

Detached Trailer(s) <trailer name or trailer names separated by comma>



4 Change Status



Set your Initial status by tapping the Duty Status button and select the appropriate driver duty status from the dialog. If the device is out of GPS coverage, the Location field will be blank, you must manually input your current location. Location is a required field and must contain at least 5 characters upon adding or editing an event. If the device is within GPS coverage, the Location field will be automatically populated with your current location.

Location records as street address for driver who is in (1) Canadian cycle; or (2) vehicle used is in AOB RD mode and 'Display Street Address for AOB RD Mode' option is enabled in Account Settings > App Controls.

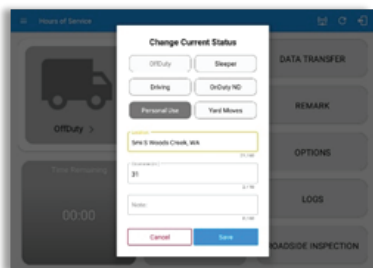
For driver whose (3) vehicle used is in ELD mode, location records the closest city with less than 5,000 population in all driver statuses event except for Personal Use event. Personal Use event records the closest city with more than 5,000 population.

Also, the current status of the app is disabled to prevent adding the same status consecutively. Attempt to create a new event such as Off Duty, On Duty, Sleeper Berth in the middle of an automatically Driving event is not allowed, instead an error dialog is displayed stating "Error: shortening of prior driving event is not allowed. Select a time before or after the driving event."

The Time Remaining will be calculated and the countdown will commence from 8 hours, the time remaining panel is color coded in the following formats:

Green : Between 8hrs and 3hrs; **Amber** : Less than 3hrs remaining; **Red** : Violation occurrence

4 Change Status Continued



• **Personal Use** – If this is enabled, the status will be set to Off Duty automatically and will disable the other checkboxes. Selection of this option will be recorded within the events history.

– If personal use is enabled, events except Off Duty will not be displayed in the grid but is displayed in the event history list. Off duty will always be the display in the grid and when the driver makes an automatic event, lock screen will also be shown.

• **Yard Moves** – If this is enabled, the status will be set to On Duty automatically and will disable the other checkboxes. Selection of this option will be recorded within the events history.

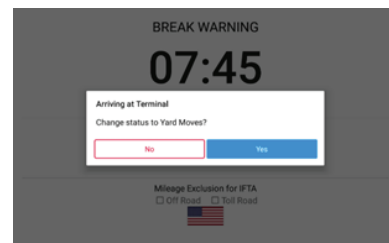
– If yard moves is enabled, events except On Duty will not be displayed in the grid but is displayed in the event history list. Off duty will always be the display in the grid and when the driver makes an automatic event, lock screen will also be shown.

Notes:

- The note field is required when changing status to “Personal Use” or “Yard Moves”.
- A static notification bar is visible when driver is currently in Personal Use or Yard Moves.

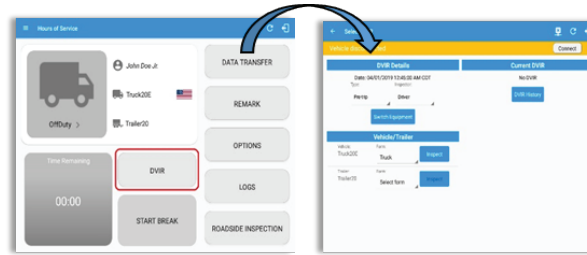
Personal Use is mentioned in the FMCSA’s Supplemental Proposal, which was published on March 28, 2014, that mandates ELDs for most drivers of CMVs that currently log. When a vehicle is turned off in Personal Conveyance (PC), the driver will be asked if he or she would like to stay in PC once the vehicle is started again. If no choice is made to continue in PC, the app will automatically transition into Driving. Off Road, on the other hand, determines that the vehicle is running on rough terrain. Lastly, **Yard Moves**, has been established under a mandate which allows driver

Yard Move Radius - if this feature is enabled on the Driver’s Terminal, a pop-up notification prompts once the vehicle enters the radius (250m, 500m, or 750m) around the terminal informing the driver to change his status to Yard Moves. Tapping Yes, button will change status to OnDuty – Yard Moves, and tapping the No button will retain his current status



Note: If the driving exceeds 20mph or 32 km/h, the status will set to Driving

5 DVIR



Select the Vehicle DVIR button from the Main Menu. Select the appropriate DVIR Details and choose the appropriate DVIR form from the options available. DVIR Form set as default on a vehicle cannot be changed into another form.

Tap Inspect button in each equipment to start the DVIR, you will be redirected to the DVIR screen.

Note: However, a dialog will display that will ask confirmation to switch you to OnDuty status when performing DVIR while current duty status is in OffDuty or will take you out to Personal Use if current status is OffDuty under Personal Use.

Type in on search field to search an inspection item.








Confirm all of the checks as passed, failed or not applicable, then select the Finish DVIR to submit.



When failing a DVIR item, an option for selecting a severity level will appear with its corresponding color: Major – Red , ▲ Minor – Yellow ▲

Items marked as “Failed” remained as failed even after the ‘Pass All’ button is tapped. The same goes for when the “Uncheck All’ button is tapped.

After successfully certifying the DVIR, a remark event will be created in the Edit Logs screen stating the completion of Pre/Post/Ad-Hoc DVIRs.

-  Select once if the vehicle check has passed
-  Select twice if the vehicle check has failed
-  Select third time if not applicable
-  Select to take a photograph to attach to the report
-  Select to add a comment to the vehicle check
-  Tap to automatically select all the items
-  Tap to automatically unselect all the items

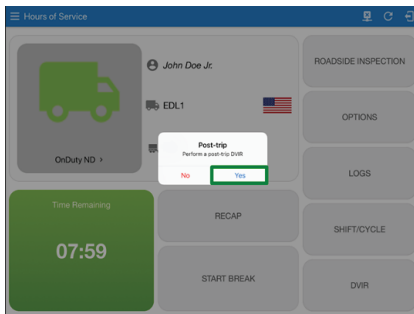
5 DVIR Continued



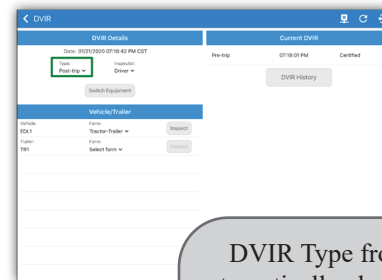
When driver manually/automatically change to Driving event without completing the Pre-trip DVIR, it will create a 'Remark' event with a note 'Pre-trip DVIR not performed for Vehicle [vehicle name] or Trailer [trailer name]'. The Remark event will be created after it detects or when a first Driving event on the shift cycle is created. Also, an alert is sent only once for each vehicle or trailer that begins to drive without having done a Pre-Trip DVIR.



DVIR History can be viewed by tapping the DVIR History button in the DVIR screen. The DVIR History feature displays the DVIRs for the last 30 days for the currently selected equipment. Completed DVIRs that don't have failed items shows in a row highlighted in green color while Completed DVIRs with failed items are highlighted in red. Also, a '+' can be tap to show the details of failed items.



If the user attempts to logout, a Post-trip DVIR dialog displays with the message "Perform a post-trip DVIR" with YES and NO buttons. Then tap the YES button.



DVIR Type from Pre-trip automatically changes to Post-trip on the DVIR screen.

6 Log On Co-Driver

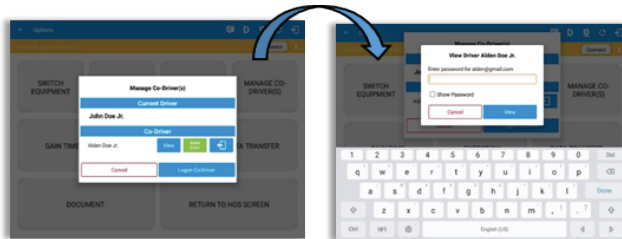
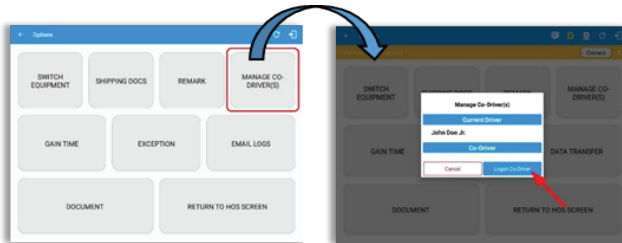
To log on further drivers, select 'Options' from the Hours of Service main screen, then select the 'Manage Co-Driver(s)' option > tap Logon Co-Driver button > enter the log on details as before.

To cancel the attempt to log in a co-driver, just tap the button 'Cancel'.

Following a successful logon, the co-driver is still Off Duty, he/she should check their availability prior to changing their status.

To switch to another logged-in driver, select 'Options' from the Hours of Service main screen then select the 'Manage Co-Driver(s) option > tap on View button.

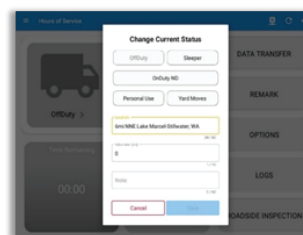
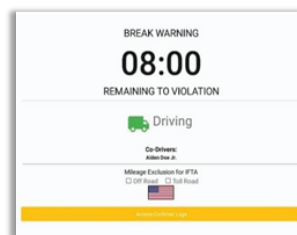
The Hours of Service app then asks the co-driver to input the password to authenticate the account.



Notes:

- Manage Co-Driver(s) new UI is still implemented on Android app only.
- A remark with a note "Co-driver logged: <co-driver name>" will be recorded on the event history list every time a co-driver is logged on the app or a note "Co-driver logged out: <co-driver name> if co-driver logged out from the app.

When in Team Driving, The Co-Driver is allowed to review his/her information by having the "Access Co-Driver Logs" option on the lock screen which allows them to access the Hours of Service dashboard and subsequently select the Logs option while the vehicle is still in motion.



6 Log On Co-Driver Continued

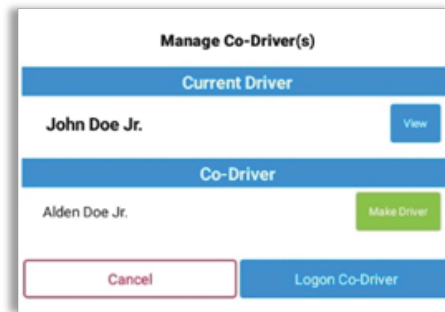
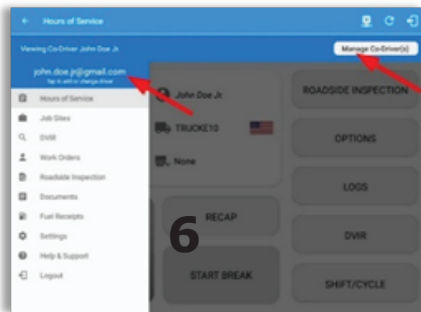
Once the Co-Driver successfully login, it will display the main dashboard with the co-driver's information with limited conditions set in Review Mode.

When in Review Mode the Co-Driver cannot receive or access:

- ✗ Driving Notifications and alerts which relates to the Driver
- ✗ Lock screen will not display even if the vehicle is in motion
- ✗ Cannot switch vehicle
- ✗ Cannot change the current event in to Driving

When in Review Mode the Co-Driver can receive or access:

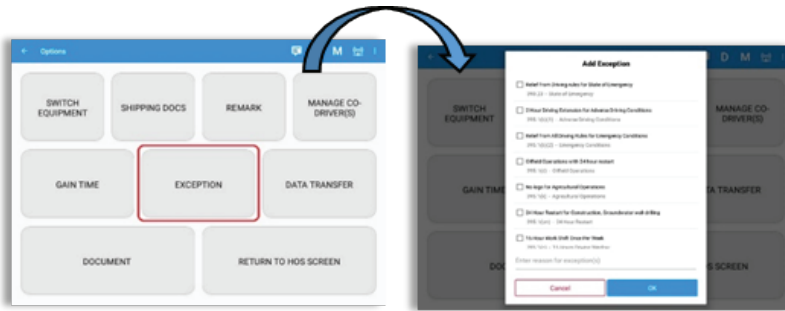
- ✓ Data Diagnostics and Malfunctions pop-up dialogs
- ✓ Pending Edit Request(s)
- ✓ Allow modifications on previous events
- ✓ Can edit current event to On-Duty ND,
- ✓ Off-Duty & Sleeper except changing it into Driving



Notes:

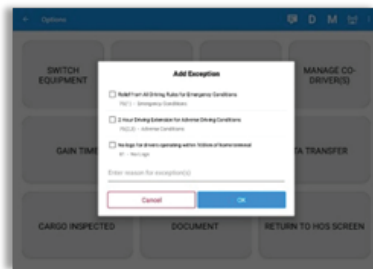
- A driver that is set as the Driver is the one currently using the application while the other one is only in the monitoring state.
- When a Co-Driver is on the Review Mode and that the vehicle is not in motion, an option to make the co-driver to become the Driver is available on the following options:
 - (1) Tap on the driver email above the menu list. or;
 - (2) Tap on Manage Co-Driver(s) button displayed below the app header.
- On Manage Co-Driver(s) dialog, user will be able to see the Current Driver and Co-Driver(s) logged into the app.
- Tap on Make Driver to confirm to make the co-driver become the Driver.

7 Add Exception



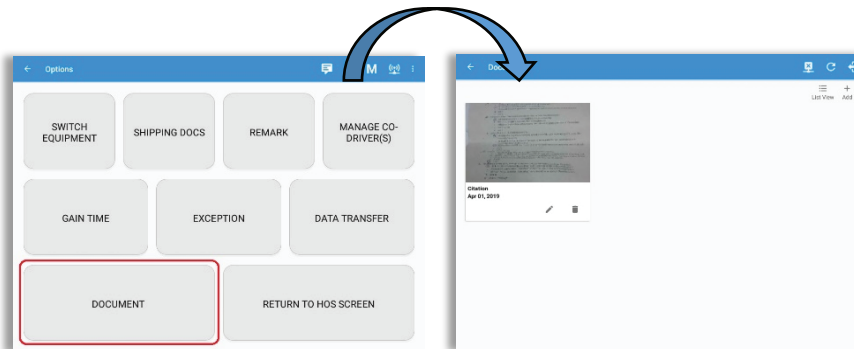
Before applying any exception rule, you must be absolutely certain that all prerequisites have been met, you must also follow any or all processes currently in place with your transportation office. Once the appropriate rule has been selected, select the OK option to continue.

Note: Exceptions for the US and Canada Regions are different.



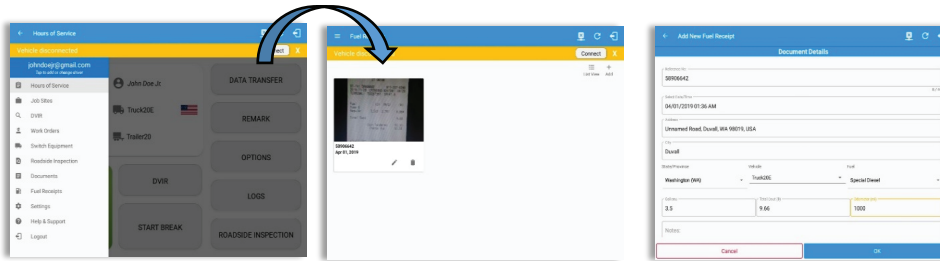
The app also supports the Canadian cycle for Alberta Province. This cycle only has 2 exceptions. (1) Emergency Conditions and (2) Adverse Driving Conditions.

8 Add Document



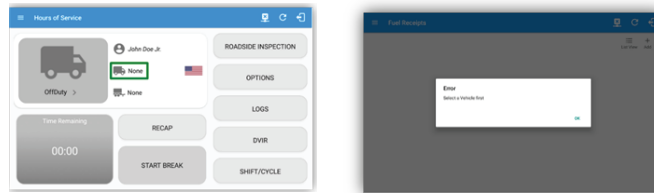
Select 'Document' to display Document module and can add, edit, delete documents.

9 Add Fuel Receipt



Select 'Fuel Receipts' menu in the Left Menu Drawer to display Fuel Receipts screen and can add, edit, delete fuel receipts.

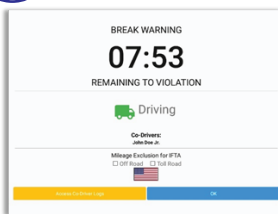
Note: For every fuel receipt created via the App fuel receipt feature, it creates a Remark event, found on the Edit Log screen, with a note "Purchased 1.345 gallons at \$53.80 price (sample note). Fuel Receipts tab will only be available for account with State Mileage feature.



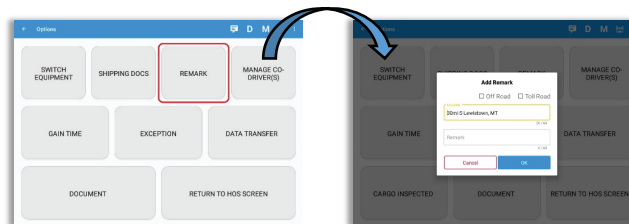
For android app, if a driver's current vehicle is "None" an error dialog will display saying "Select a Vehicle first".

Note: A Driver can only add a fuel receipt if the current vehicle selected is not "NONE".

10 Add Remark



- When Off Road is enabled it will create a "Remark" with a note "Off Road". When uncheck it will create a "Remark" with a note "On Road".
- When Toll Road is enabled it will create a "Remark" with a note "Start Toll Road". When uncheck it will create a "Remark" with a note "End Toll Road".



If driver stop driving while one of the checkbox is enabled the driver can still uncheck the "Off Road" or the "Toll Road" through the Options screen > Remark.

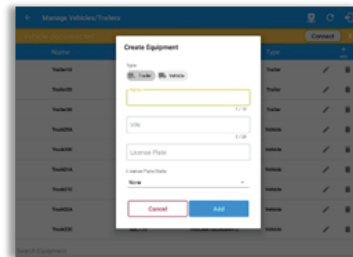
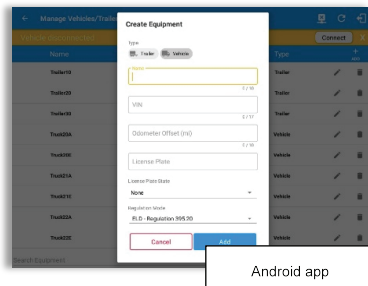
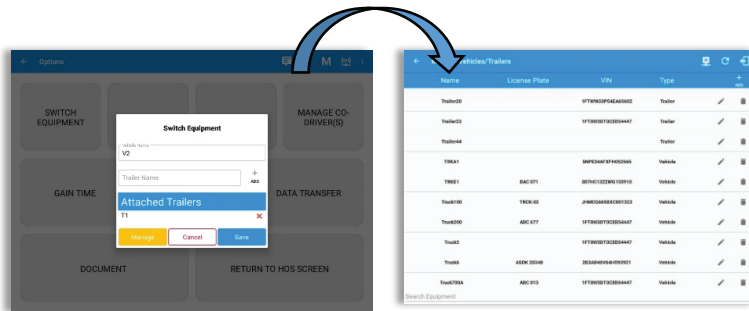
11 Manage Vehicles/Trailers

Equipment management (add/edit/delete) can be made through the portal and Hours of Service app.

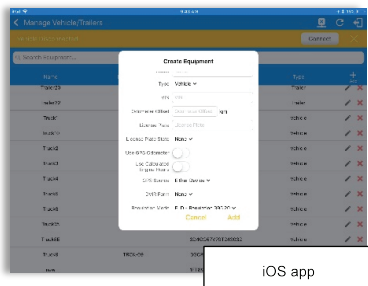
Hence, the 'Manage' button is only available given a situation, that the driver is an asset admin and that the 'Allow drivers to manage equipment' option is both enabled in account settings and driver settings. Otherwise, the button will not be available on the Switch Equipment dialog. Driver can then add, edit or delete equipment via app depending on the permission set on driver setting.

Creating a vehicle requires a VIN, if the VIN is optionally populated and that the source is not the engine ECM, it will auto be converted to capital letters when saved. If driver created trailer, VIN is also enabled but is not required when saving. This also didn't require the valid format.

In the Equipment Management, a Vehicle type equipment can be preconfigured to associate to a specific VBUS device. Once the VBUS Configuration is turned on, it automatically connects the app to the device when the Vehicle is selected. However, if no device was selected during the creation of the equipment, the default selected device option is set to “None” and all the other fields on the ELD configuration section will be hidden.



For Trailer type Equipment

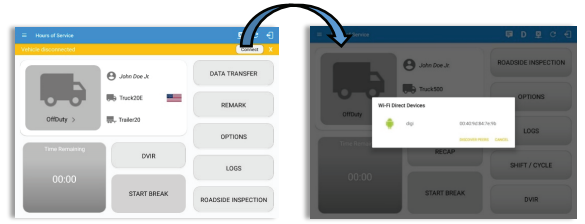


For Vehicle type Equipment

Notes:

- If user selects “Digi WVA” in connection type, then admin password field is required.
- Firmware version field can be manually populated. For some VBUS devices, it is already pre-populated.
- For iOS app, VBUS Device information is not displayed. Only for Android application.

ELD/VBUS Connection Process






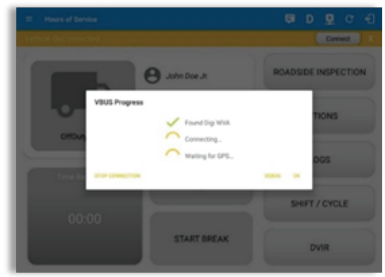
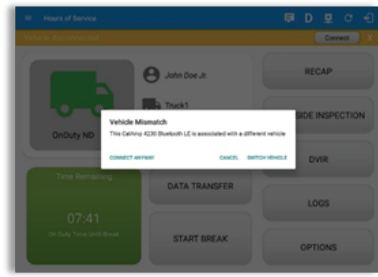
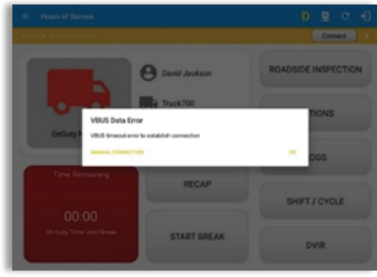
- Legend:**
-  Disconnected
 -  Connected
 -  Reconnecting (flashing)

Image 10.2 shows the WiFi Direct Devices dialog (for Digi WVA device)

 displays the 'Connect to Vehicle' dialog

To establish a connection to the VBUS Device, tap on this icon  found in the application header. While in the reconnecting state, a progress dialog will be displayed along with the flashing VBUS icon  to have a visual indication of the connection process. After successfully connecting to the VBUS Device, the icon will then change to a solid VBUS icon 

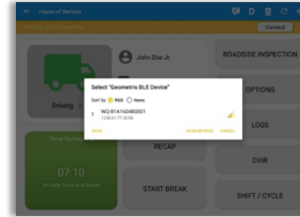
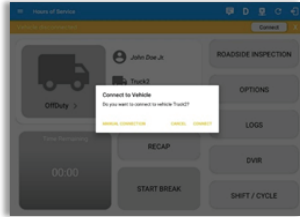


- The driver can also cancel an in-progress connection via the OK and STOP Connection button found in the VBUS Progress dialog.
- If the app attempts to connect to an unsupported device, the app then displays a dialog which warns the user that the equipment has an invalid VBUS device type set and that the default device type is being used. The 'Device Not Supported' dialog will be displayed stating: "Device is no longer supported. Please use manual connection." along with a Cancel and Manual Connection button.
- The VBUS Data Error dialog will appear when no VBUS data received within the specified duration.
- The Vehicle Mismatch dialog prompts if driver performs manual connection then selected a VBUS device that has been associated to a different vehicle. However, tapping 'Connect Anyway' will proceed to VBUS connection process. While tapping 'Switch Vehicle' allows the driver to switch to another vehicle. VBUS Progress dialog will display and spinner will then start once the selected vehicle is associated to a VBUS device.

12 ELD/VBUS Connection Process Continued

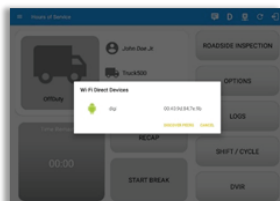
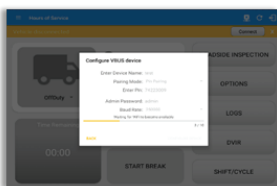
MANUAL CONNECTION

- Tapping the 'Manual Connection' button will display a dialog showing a list of supported VBUS devices.
- Tap on the device name to display the 'Connect' dialog and established a connection to the device
- After the app established a connection to the VBUS Device then the ELD Login Dialogs, such as Uncertified Log, Pending Edit Request, Exempt Driver dialogs, will be displayed.



- When a driver performs a manual connection, the app remembers the VBUS device that he connected to and automatically connects to that VBUS device in the future.
- On the Bluetooth menu, the available Bluetooth devices are displayed and can be sorted either in decreasing signal strength (RSSI) or name.

CONFIGURING A VBUS DEVICE



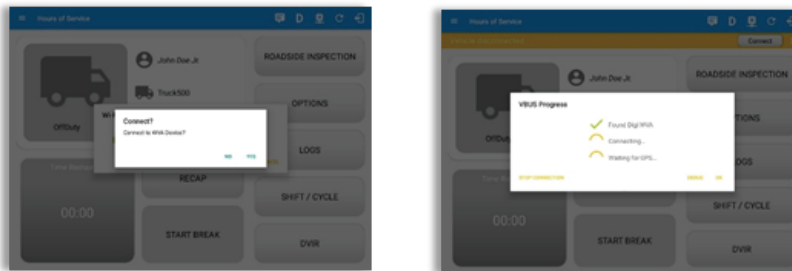
- Tap 'Scan QR Code', then scan the QR Code of the device
- Fill in the device name then select the pairing mode
- Tap "Configure Device" then wait for the direct WiFi created by the device to be available
- Configuring wireless connection dialog will then display
- After wireless connection dialog, the available devices will then appear
- Tap on the newly created device and the connect dialog will then display.
- If 'Yes' is tap, then it will connect the app to the device. If 'No' is tap, the dialog will be close.

12 ELD/VBUS Connection Process Continued

AUTO CONNECTION

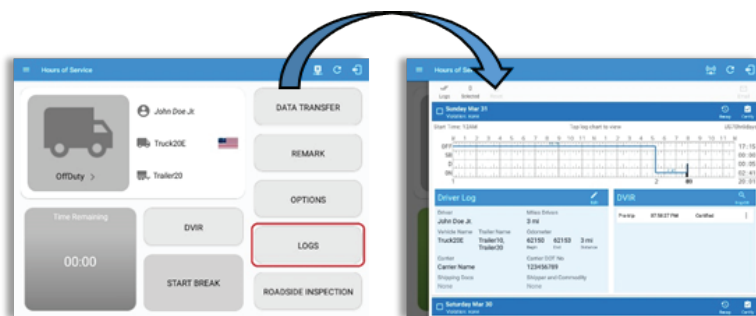
Note: Automatic connection requires association between vehicle and VBUS device using portal or app equipment management.

- Tap on the Connect button
- The VBUS Progress dialog will then display
- Upon establishing a connection to the VBUS device, you should hear a tone letting you know that the device is now connected and that an event 'ELD Login' along with a 'VBUS Connected' remark will be recorded in the events list.



- When disconnecting the app to the VBUS Device, tap the VBUS icon in the application header to display the Disconnect dialog. Confirming the request will successfully disconnect the app to the VBUS device and an event 'ELD Logout' along with a 'VBUS Disconnected' remark will be recorded in the events list. However, if the connection was drop due to interruptions (low signal & etc.) which will disconnect the app to the VBUS device, it will not create an 'ELD Logout' event.
- If the device was left "Connected" during the logout process then it immediately re-establishes a connection upon the login process.
- The app retains the selected device upon re-establishing the connection, unless the driver chose another device.

View Logs

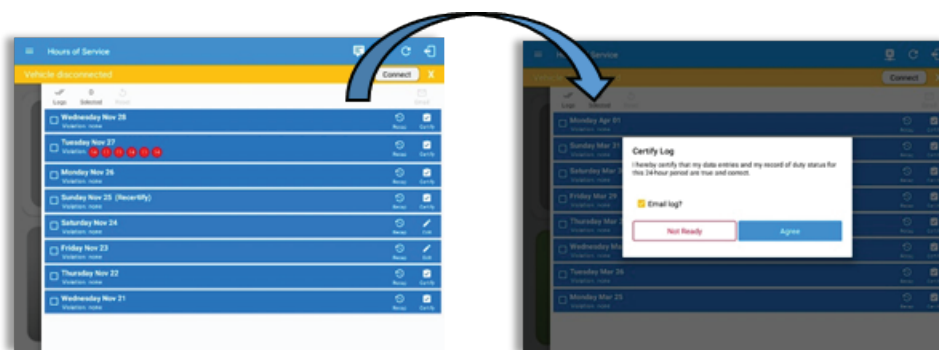


Previously created log entries and violations are recorded here.

Tapping the icon will certify the driver's daily log.

When a certified log has been edited in the portal, it prompts the driver to either accept or reject proposed changes through the “Edit Suggestions” dialog. Once the driver accepts an edit request, it will display a note on the daily driver’s log title stating “Recertify”.

The driver’s log title will also show the full time range when the ‘Start Hour of Day’ is not zero (e.g. 5AM or 10PM) for the current day. Start Hour time & cycle can be changed at Settings > HOS Preferences.

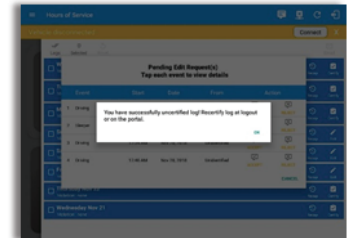
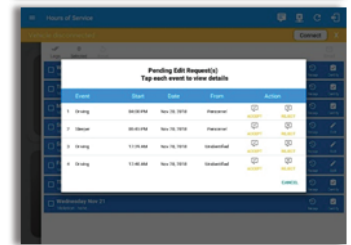
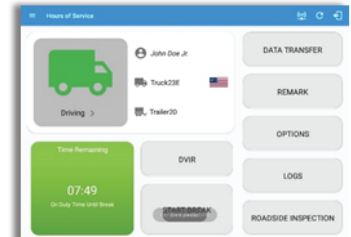


The driver's daily log along with the multiple DVIR entries for the vehicles/trailers used, can be successfully certified and emailed to the intended recipient(s).

Note: When the cycle used is Canada, a 14 days logs will be displayed. For Alberta cycle, a 3 days log will be displayed.

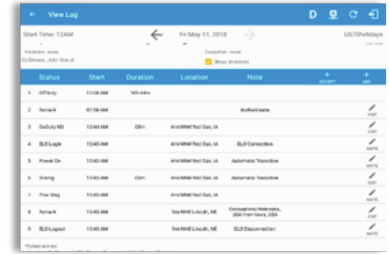
View Logs- Continued

- Log Edits Requested from the portal by personnel user are shown in the app to allow the driver to review the requested edits.
- Tapping the icon displayed on the left-most side the header will display the Pending Edit Request dialog which allows the driver to either accept or reject the requested edits. Accepting the requested edits of the day that is beyond the last 8 days log for USA cycle (14 days log for Canada cycle) will display a warning dialog informing that driver needs to recertify the log at logout on the app or driver can log into the drivers' portal to certify the log for that day.
- The icon on the right side of the Malfunction indicator changes to show if the application is connected to a VBUS device.
- If the Driver approves to the edit suggestions then the new status will be displayed on the events history list and will replace the old status.
- Also, when a Driver has a co-driver and they log into the app, the other driver's name will be displayed on the daily log just below the grid chart.
- Events such as Certify, Personal Use, Off Road, Yard Moves, Power On/Off and Login/Logout are recorded and displayed within the events history list.
- In addition, not all of the event statuses are displayed on the grid chart. Secondary events like VBUS Connected/VBUS Disconnected remarks are hidden by default and may be viewed by checking Show all events button. If user toggle off 'Show all events' switch, the following events are hidden: Diagnostic/Malfunction clears, Vbus Connect/Disconnect, Authenticate/Unauthenticated, Dvir Not performed/ Dvir Completed, Log certified remark, Start of day Odometer remark, and Toll road start/stop.
- Personal Use and Yard Moves are also displayed on the grid chart as an Amber color line to be visually different with the other event statuses, a dashed line represents the Personal Use event and a dotted line represents the Yard Moves event. The legends for Personal Use and Yard Moves event will only display when the said events occurred. In addition, upon disabling the events "Personal Use" or "Yard Moves", it records a new event on the list stating "ClearPC" or ClearYM" which indicates the clearing of the option for Personal use and Yard Moves. Thus, it will not reflect on the grid chart.



13 View Logs- Continued

- At each instance when an ELD malfunction or data diagnostic event is detected or cleared by the ELD, the ELD records the event.
- The recorded malfunctions and data diagnostic events are inconsistencies found while monitoring the app/ELD against FMCSA compliance requirements.
- If a driver crossed boundaries between states of Canada and US (vice versa), a “Remark” event with a note stating the State or Province will be automatically recorded in the driver’s log
- If Driver login to app, Authenticate note will be recorded to events history list. If Driver will logout to the app, the note “Unauthenticate” will be recorded on the events history list.
- When the app is connected to the VBUS device an ELD Connection note will be recorded to events history list. When disconnected to VBUS device an ELD Disconnected note will be recorded to the list.
- Driver will be able to add a note to the following events
 - o Intermediate log
 - o Login/logout
 - o CMV Engine power up/shut down
 - o Malfunctions and Data Diagnostic events



Status	Start	Duration	Location	Note	+	-
1	Off Duty	11:00 AM	Ill. Ave.			
2	Remark	07:00 AM		Authenticate		
3	Driving HD	12:00 AM	Ill. Ave	ELD Connection		
4	ELD Log	12:00 AM	Ill. Ave	Automatic Transition		
5	Power On	12:00 AM	Ill. Ave	Automatic Transition		
6	Driving	12:00 AM	Ill. Ave	Automatic Transition		
7	Power Off	12:00 AM	Ill. Ave	Automatic Transition		
8	Remark	12:00 AM	Ill. Ave	ELD Disconnected		
9	ELD Logoff	12:00 AM	Ill. Ave	ELD Disconnected		



Status	Start	Duration	Location	Note	+	-
1	Off Duty	11:00 AM	Ill. Ave.			
2	Remark	07:00 AM		Authenticate		
3	Driving HD	12:00 AM	Ill. Ave	ELD Connection		
4	ELD Log	12:00 AM	Ill. Ave	Automatic Transition		
5	Power On	12:00 AM	Ill. Ave	Automatic Transition		
6	Driving	12:00 AM	Ill. Ave	Automatic Transition		

- **Annotate Incorrect Driving Feature** is the ability to exclude the time of an auto-driving event from the hours of service calculations on the android device.



Start Time: 12:00 AM Wed Feb 26, 2020 Card#30r/Day

19:46
08:00
04:14
00:00
24:00

Annotate incorrect driving to exclude it from hours of service calculations

Begin: 08:13 End: 08:13 Dur: 04:13

Note:

Reason: Select Reason For EEL

Cancel Save

Notes:

- o Set *hos.annotate.driving.feature.enabled* to true on the Account Property.
- o And on the HOS Preference setting, 'Use Grid View Editing' option should be enabled to use the feature.



The ELD provides a standardized single-step compilation for the driver's ELD records and initiation of the data transfer to authorized safety officials when requested during a roadside inspection.

Once tapped, a selection of the supported data transfer options by the ELD will prompt to the user.

The ELD can also produce a data file or a series of data files of ELD records for a subset of its vehicles used by the driver through the 'Switch Equipment' option. Tap on the menu to show the list of vehicles.


Notes:

- *All Vehicles' option will only display on the list when the driver has already driven multiple vehicles for the day.*
- *For Android app, list of vehicle/s are displayed in checkboxes. After selection of vehicle(s), it will then prompt the Data Transfer dialog to select data transfer options: Bluetooth, USB, Email or Web Service.*
- *For iOS app, list of vehicle/s are displayed in checkboxes. The app allows to select specific vehicle(s) to be included in ELD output file. The list of vehicles displayed are the vehicles that the driver used within the current cycle. Select vehicle by tapping the checkbox button. Tap OK button to save selection. The available data transfer options for iOS app are Bluetooth, Email and Web Service only.*

After selecting a data transfer option, the ELD prompts for an output file comment which the driver may enter (optional). The ELD accommodates the entry of an output file comment up to 60 characters long.

15 Log Off



Select the  icon to log out of the VisTracks - Hours of Service app. If you have not set your status to 'Off Duty', it will automatically change this for you.

If the driver did not certify all the daily logs, the ELD prompts the driver upon logging in and out to the app when there's a past recorded log that are not yet certified. However, If the Driver is an Exempt Driver or a driver that operates under the short-haul exemption (395.1 (e)), upon logging out a dialog will display again confirming whether the driver chooses to continue as an exempt driver.

If the driver logs out from the Hours of Service app and the vehicle is put into motion for more than 3 minutes, Unidentified Driving Events are automatically created under the Unidentified Driver account. When an Authenticated Driver logs into the Hours of Service app, these events can then be accepted by the driver or be left in the Unidentified Driver account. However, the app prevents from Unidentified Driving for vehicle in AOBDR mode.

Unidentified Driving event assigned by Personnel via portal can be rejected by the driver.

Lastly, once the **“Logout”** button is tapped, the valid driver that logged into the Hours of Service app will be logged out and the Hours of Service app will be close completely (with no VisTracks service or VBUS service running in the background).

Additional Instructions

How to have the ELD application **AUTO-UPDATE** when there is new software release:

- 1) From the main tablet screen, touch Play Store (colorful triangle)
- 2) Touch hamburger (menu) icon, top left
- 3) Touch "My apps and games"
- 4) Touch "Installed"
- 5) Touch "Datasmart ELD"
- 6) Touch three little dots, top right
- 7) Touch box next to "Enable Auto Update"

How to address **Incorrect Driving** time:

- 1) Touch Logs
- 2) Select a day (for which the log has not been certified yet)
- 3) Touch inside the log graph
- 4) Touch the yellow "+" button at the bottom right corner
- 5) Select Annotate Incorrect Driving button
- 6) Select Begin and End times
- 7) Add a note
- 8) Select Reason for Edit

Geometris Device LED Codes

DEVICE LED CODES

Each Geometris Device comes with a Green & Red LED Light visible to the user when in use. The Led behavior can tell you if there is something wrong with the device or it is running normally.

Following are the LED Events:

LED Status	Error Description
Green LED Blinks Regularly	Device is working normally
Green LED Blinks Fast	Ignition is ON and device is charging (Working normally)
Red LED Blinks 1 time in series	Bluetooth Error
Red LED blinks 2 times in series	Cellular Error
Red LED <u>blinks 3 times in series</u>	<u>GPS Error</u>



datasmartELD™

DatasmartELD is a division of M2M Datasmart, Inc