



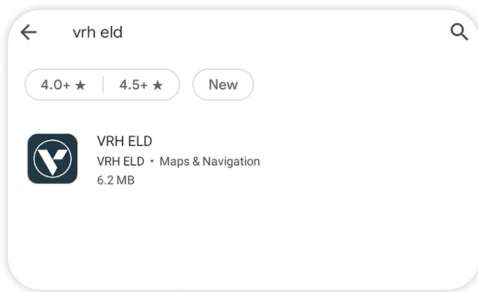
VRH
TRACKING
TECHNOLOGIES

Driver Manual

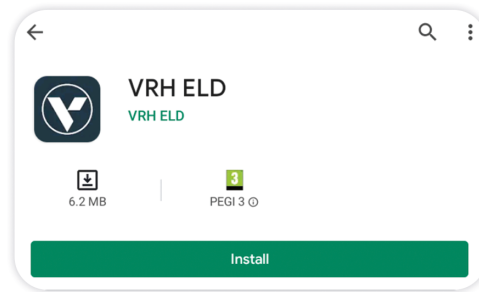


Download VRH ELD Application

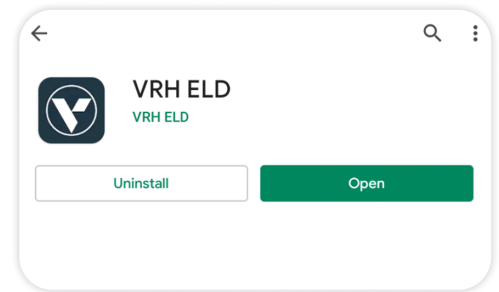
1. Search for “VRH ELD” in the Google Play (Picture 1, 2, and 3)
2. Tap “Install” to download the application



Picture 1



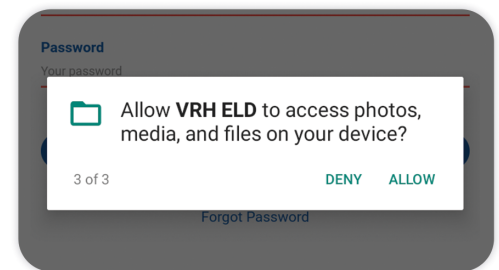
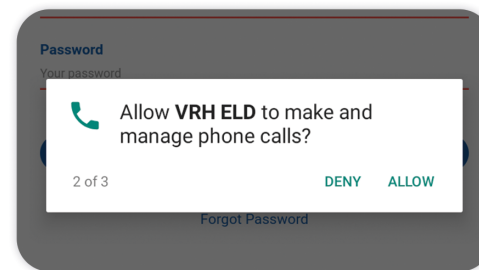
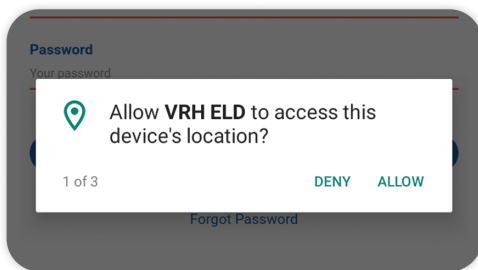
Picture 2



Picture 3

3. Upon installing the application, please grant permission for the app to access your location, make and manage phone calls, and access photos and media on your device.

NOTE if you decline any of these permissions, the app will be unable to function properly.



Installation process of the ELD device

1. Ensure that your truck engine is turned on before attempting to connect the ELD device.
2. Locate the diagnostic port within your vehicle's cabin. Typically, the diagnostic port can be found in one of the following areas:
 - a. Under the left side of the dashboard.
 - b. Under the steering wheel.
 - c. Near the driver's seat.
 - d. Under the driver's seat.
3. Take the connector and plug it into the ELD device port. Then, connect the other end of the connector to the diagnostic port of your vehicle. Make sure to twist the plug base unit so that it securely locks into place.
4. It is not necessary to manually pair Bluetooth in your phone or tablet settings. The connection will be established automatically within the VRH ELD application. However, if your phone or tablet prompts you or requests permission to enable Bluetooth, please proceed with enabling Bluetooth, as it is required for the device to communicate with the application.
5. You should observe a flashing green LED, indicating that the device is powered. Additionally, a flashing red LED signifies that the internal GPS is in acquisition mode. It is acceptable to proceed to the next step without waiting for the GPS lock, even if the LED is solid. Continue to the next step.
6. At this stage, the device has obtained and stored the necessary information, including the VIN, to establish communication with the app via Bluetooth Low Energy. Please be aware that for power management purposes, the LEDs may not remain continuously illuminated.

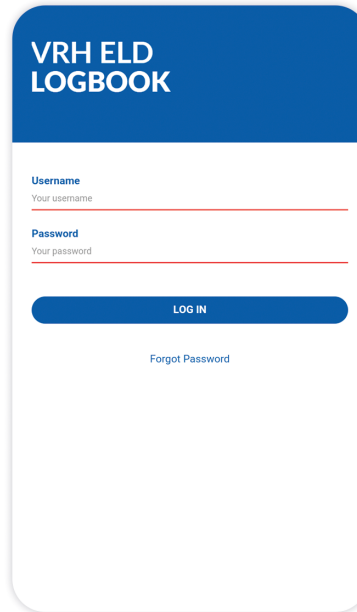
Using the app VRH ELD

1. Enter your username and password in the provided fields to log in securely. (Picture 1)

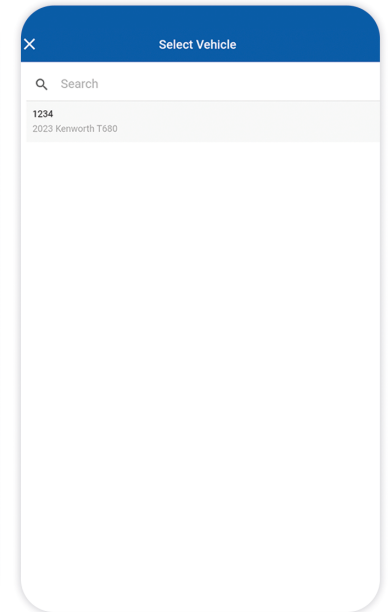
2. Choose your vehicle from the list of available units. (Picture 2)

3. Enter the MAC address exactly as it appears on your ELD device into the app, using capital letters and digits. Then click on the "Connect" button to establish the connection. (Picture 3)

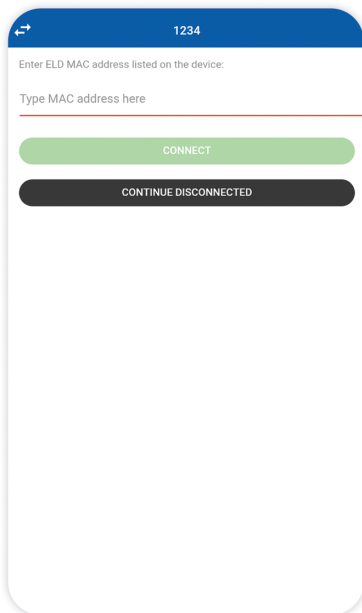
4. If you receive a notification indicating that some items from the following list are not enabled or turned on, please take necessary action to ensure all the required items are activated for proper functionality. (Picture 4)



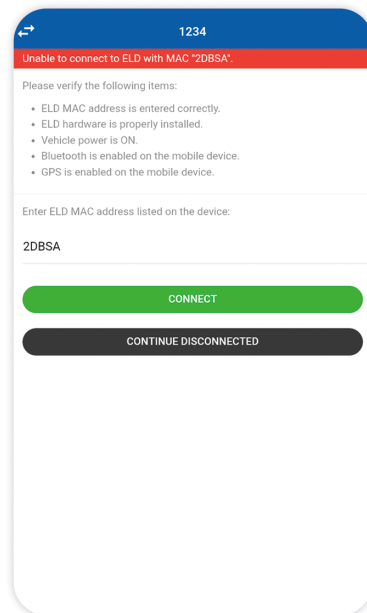
Picture 1



Picture 2



Picture 3



Picture 4

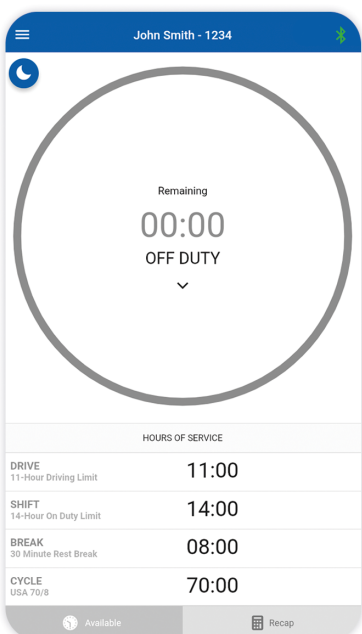
5. Once you have established a successful connection, you will notice a green Bluetooth icon displayed in the top right corner of the screen, indicating that you are properly connected. (Picture 5)

To modify any status, click on the clock icon.

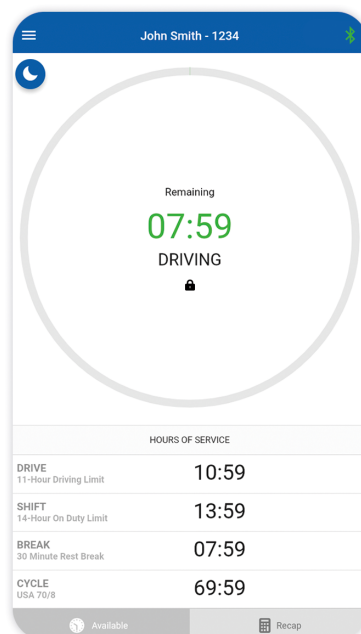
6. The driving mode will automatically switch when you begin driving at a speed exceeding 5 MPH. (Picture 6)

Please avoid manually selecting the driving mode.

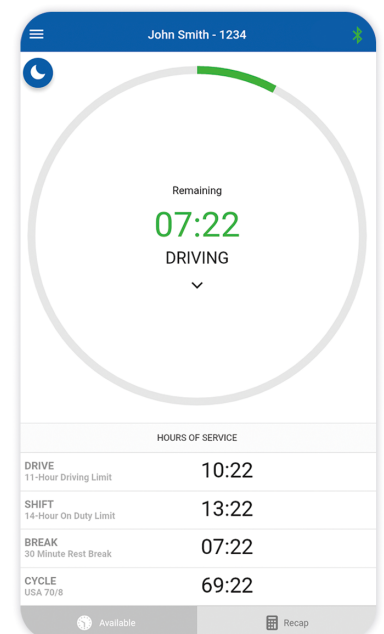
7. When the vehicle comes to a stop, the driving mode will be unlocked, allowing you to change the status as necessary. (Picture 7)



Picture 5



Picture 6



Picture 7

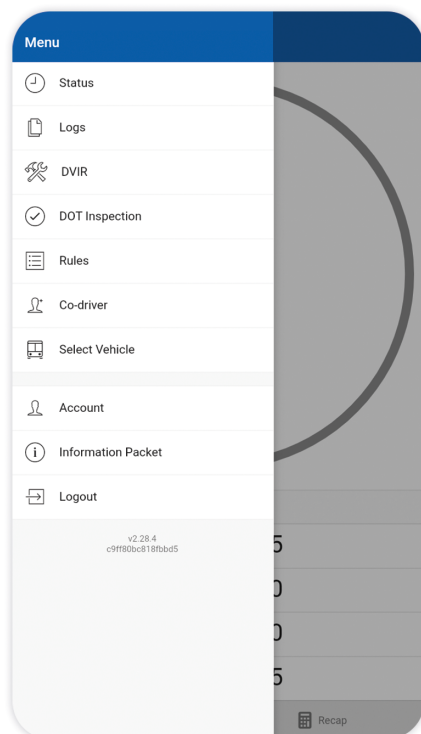
VRH Features

- ✓ Achieving internal synchronization with the engine control module
- ✓ Automated time and detail recording
- ✓ Implementing precise location recording
- ✓ Facilitating electronic data transfer
- ✓ Ensuring certification of driver records at the conclusion of each 24-hour period
- ✓ IFTA reports

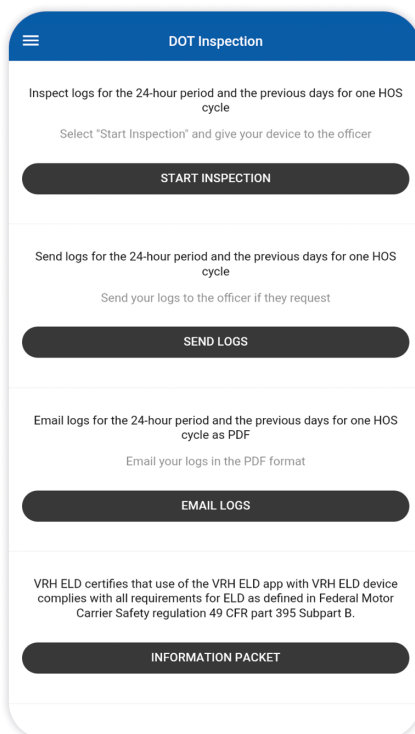


How to send the output file

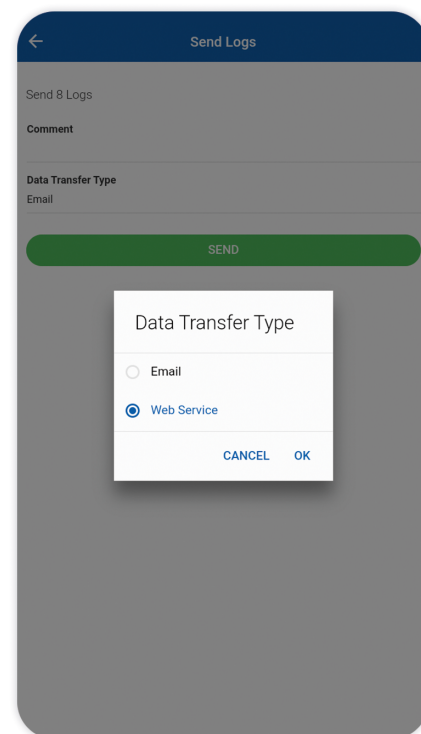
1. Click on the menu ☰ (Picture 1)
2. Select "DOT Inspection" (Picture 2)
3. Click on "Send Logs" (Picture 3)



Picture 1



Picture 2



Picture 3

Do you need assistance? We are here to help!

+1 (754) 444-0286

support@vrhtrackingtech.com