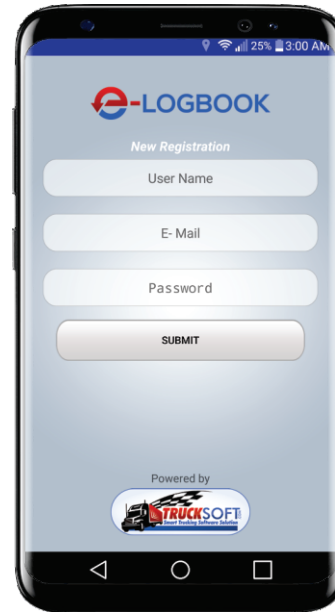




## 1) REGISTER IN E-LOG

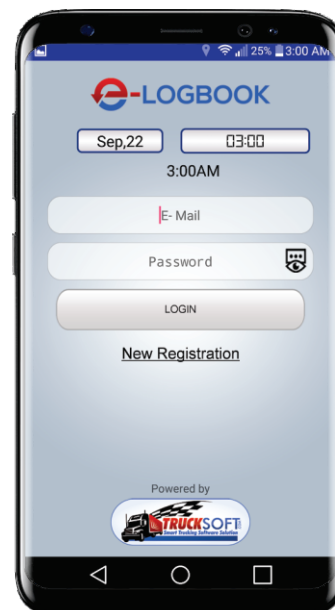
- a) User Name
- b) E-Mail
- c) Password

Provide for Driver Registration



## 2) LOGIN

For Login driver have to provide E-mail and password

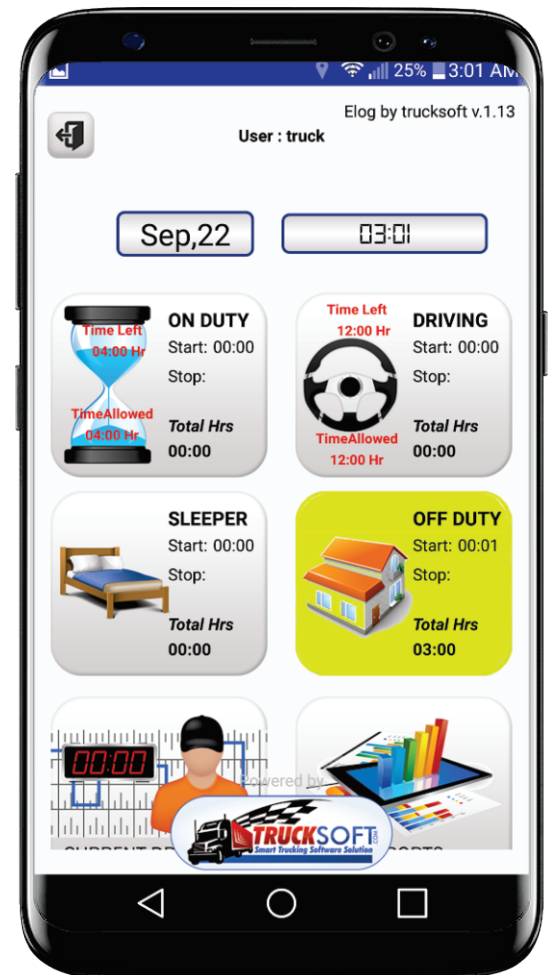




## 3) DASH BOARD

In Dash Board We can see the Date and Time and Controls of E-log

- a) **OFF DUTY**  
This button show driver in Off duty mode
- b) **ON DUTY**  
This button show driver in ON duty mode
- c) **DRIVER**  
This button show driver in DRIVER duty mode
- d) **SLEEPER**  
This button show driver in SLEEPER duty mode



## E-LOG CAPTURE

- i) Start Date and Time
- ii) End Date and Time
- iii) Latitude and longitude
- iv) Total Duration
- v) Driver ID



## 4) BREAK

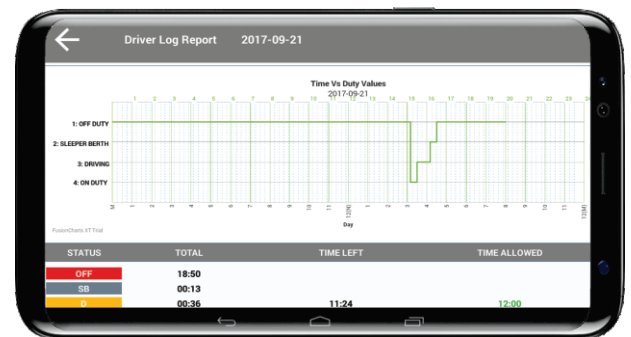
E-log Intimate Notification for Break various times Like 10 min for 2 hrs

- a) If Driver click Yes it went auto to OFF DUTY
- b) No means E-Log take voice record for reason



## 5) DRIVER DAILY REPORT

- a) Graph show total OFF Duty, Sleeper, Driver, On Duty Total time Graph and time
- b) According status website shows start time and end time
- c) Total miles and location





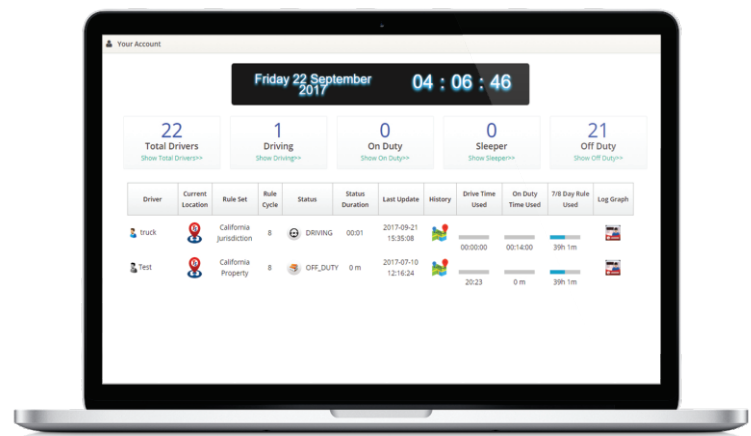
## 6) DRIVER MONTHLY REPORT

Click on Eye Icon  
we can see the Graph

DATE	ON DUTY (Hr)	OFF DUTY (Hr)	DRIVE (Hr)	SLEEP (Hr)	
2017-09-21	0:14	15:22	0:36	0:13	👁️
2017-09-22	0:0	6:49	0:0	0:0	👁️
2017-09-20	0:0	23:59	0:0	0:0	👁️
2017-09-14	0:0	0:0	3:13	0:0	👁️
2017-09-13	0:0	23:47	0:12	0:0	👁️
2017-09-11	0:1	14:25	1:27	0:0	👁️

## 7) IN WEB SITE DASH BOARD

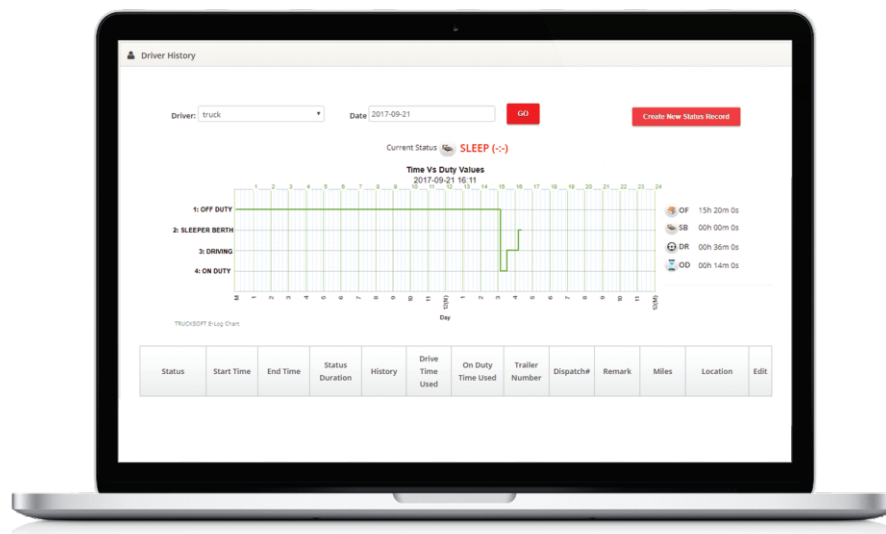
- a) E-Log shows Total Drivers
- b) No of Driving Drivers
- c) No of On Duty Drivers
- d) No of Off Duty Drivers
- e) No of Sleeping Drivers
- f) Driver status Online or Offline
- g) Show Current Location
- h) Show Status
- i) Duration of status
- j) History







## 8) GRAPH IN WEBSITE



- We can Search by Driver and date
- We can create new status
- Graph show total OFF Duty, Sleeper, Driver, On Duty Total time Graph and time
- According status website shows start time and end time
- Total miles and location