



ELD 88

USER MANUAL



INSTALL & CONNECT ELD



ELD Device



9-Pin Port



6-Pin Port



OBDII

1 LOCATE ECM (DIAGNOSTIC) PORT

Locate ECM (diagnostic) port inside of your vehicle. Look for 9-pin or 6-pin circular ports in heavy duty vehicles. Look for OBDII port in light/medium duty vehicles

2 INSTALL ELD

Simply plug the provided cable into a vehicle ECM (diagnostic) and attach the other end to the ELD device. The dual fastener is provided for dash mounting.

3 LOG INTO ELD 88

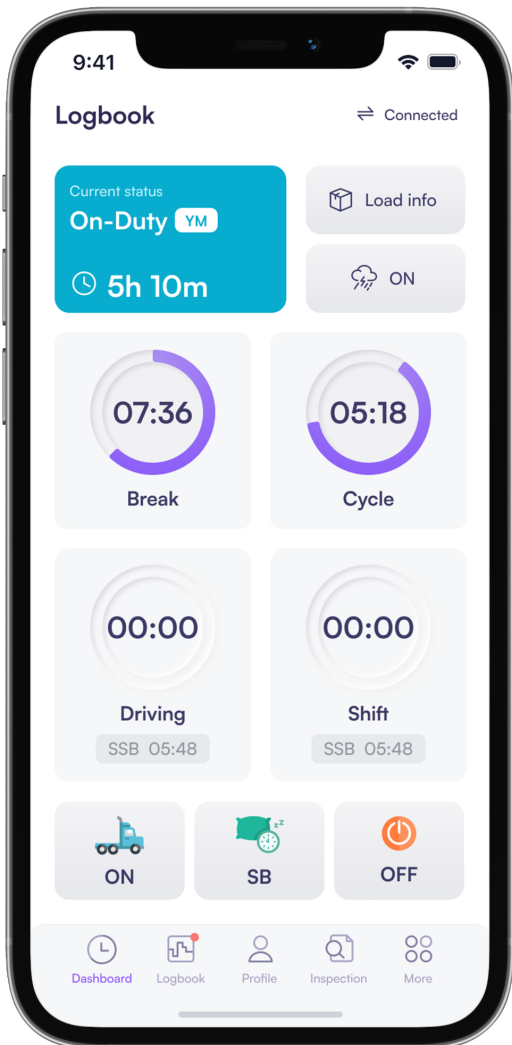
Log in to ELD 88 App on your tablet/smartphone with a username and password created during a sign up process or provided by a fleet manager.

4 CONNECT ELD

Select a vehicle from a list of available vehicles and your device will attempt to connect to ELD via Bluetooth. Active Bluetooth indicator means you are ready to start using ELD.



DRIVING WITH ELD



- ✓ Once ELD connected, your driving time will be captured automatically.
- ✓ Once your vehicle is moving at 5 mph or more, your duty status is switched to Driving.
- ✗ Your logs and others features are not available while in Driving mode due to safety reasons.
- ✓ Once your vehicle is stopped, you may change your duty status by tapping on the status circle. The app will remind you to make a selection in 5 minutes. If no selection is made, your duty status will be switched to On Duty.

Set duty status with just two-clicks. Status is updated automatically when driving starts or stops, Easy-to-use interface allows drivers to spend less time doing paperwork and more time driving. ELD simplifies training and prevents log errors.

✓ CURRENT STATUS

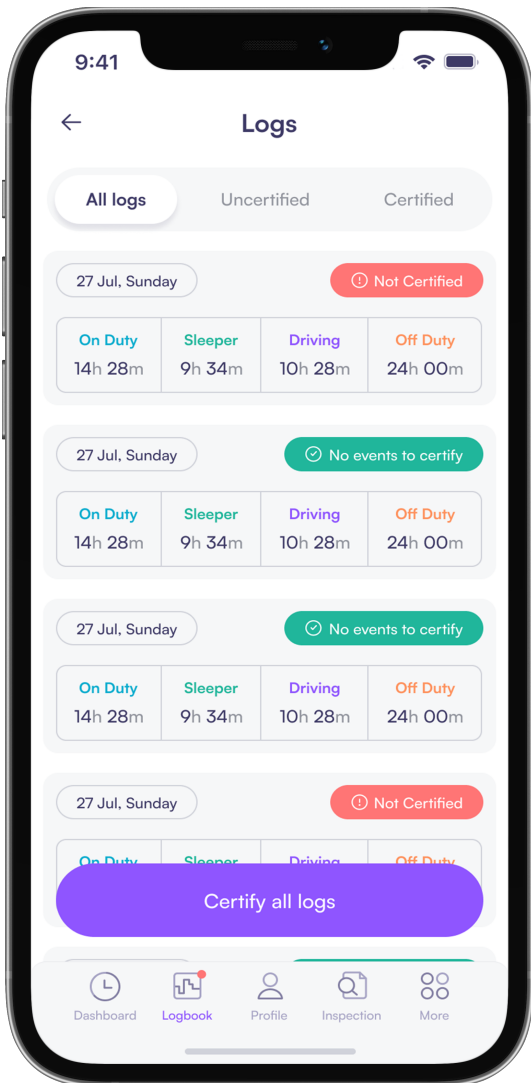
Current duty status is always displayed on Status page inside of status circle along with available or reset hours.

✓ CHANGE STATUS

Tap the status circle, select your current status, add a note if necessary (i.e. pre-trip inspection) and press “Update” button.

✓ PERSONAL/YARD MOVE

Personal Use Off-duty and Yard Move On-Duty statuses must be configured and allowed by a fleet manager.



TODAY'S LOG

Tap on TODAY'S log to view & manage your current log



LOGS HISTORY

View past logs & violations if any. Tap on a log you would like to view or edit.



GRAPH GRID

Similar to paper logs, view your hours or service on the graph grid.



STATUSES/EVENTS

Tap on a specific status in the events section to view location and notes.



EDIT/INSERT STATUS

Press on "Pencil" to edit or "+" to insert a past duty status.

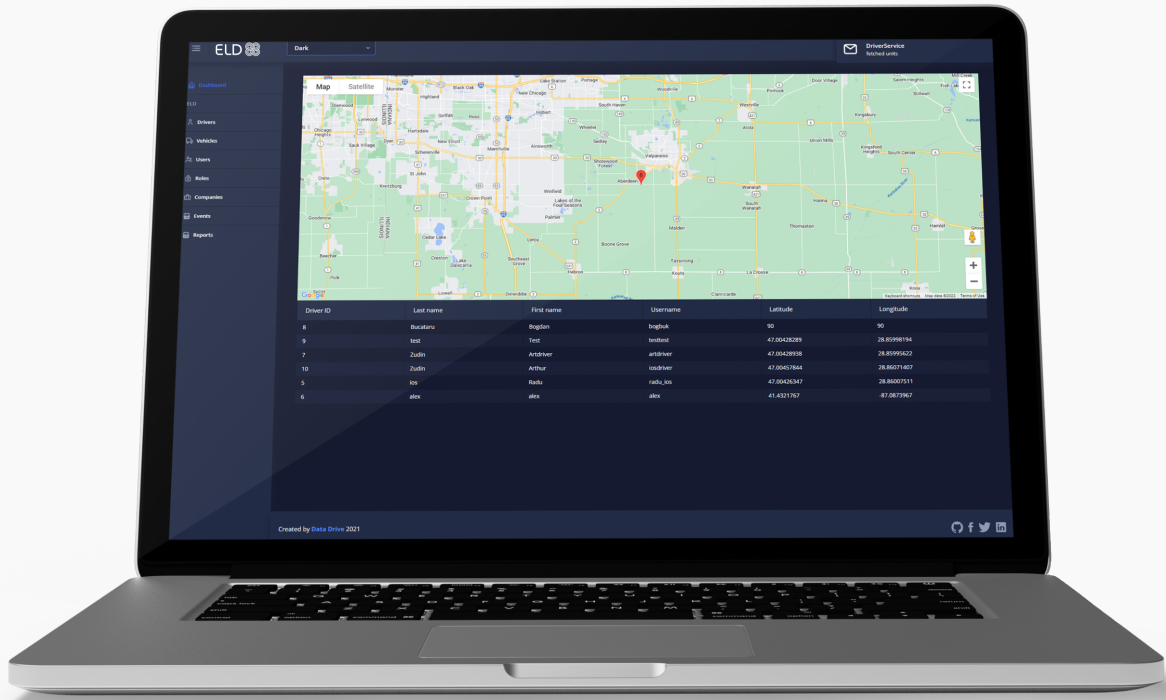


CERTIFY LOG

Tap "Certify" and sign your log when your shift ends.



FLEET ADMINISTRATION



CURRENT STATUS

View current statuses and locations of your drivers. Click on a driver to see details.



REAL-TIME HOURS

View real-time hours to avoid violations and regulatory fines.

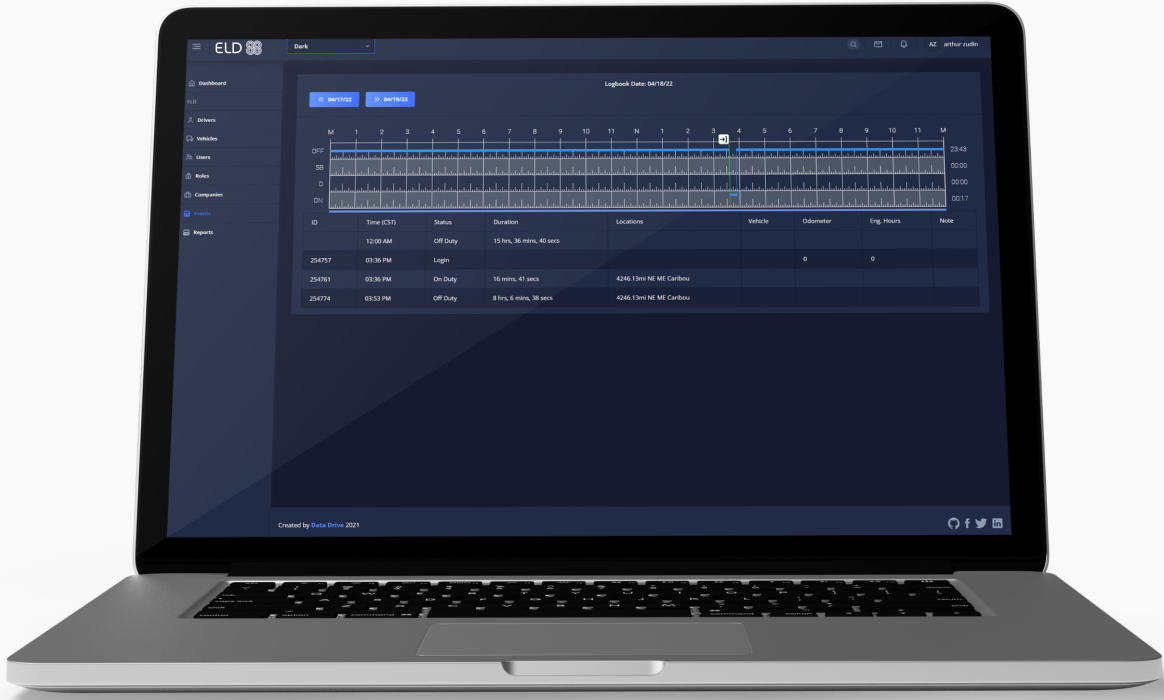


VIOLATIONS

Monitor in real time and mitigate compliance risks.



LOGBOOK DETAILS



VIEW LOGS

View all current and past logs up to six months.



FILTER

Filter by date or driver.



VIOLATIONS

Monitor violations in real time.