

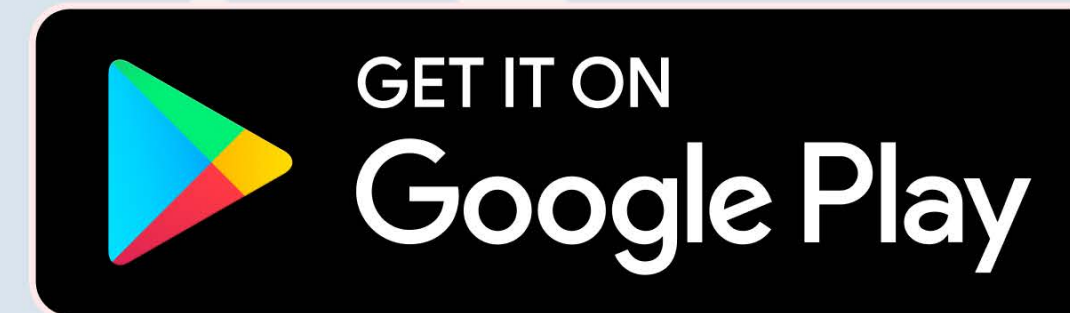
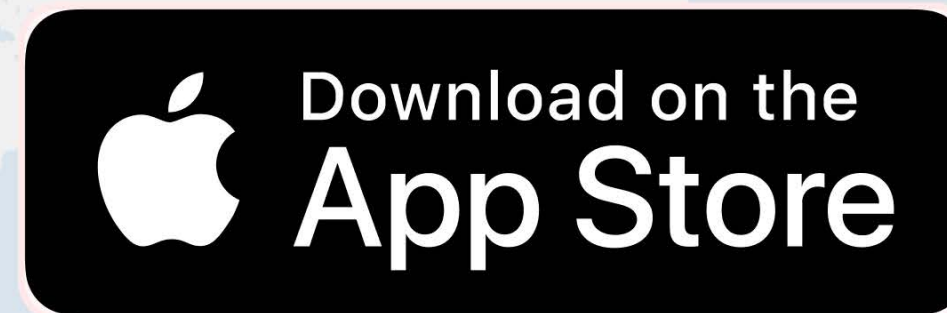
OnroadELD

Email: hello@onroadnetworks.com

phone: +1 412-894-5873

GETTING STARTED

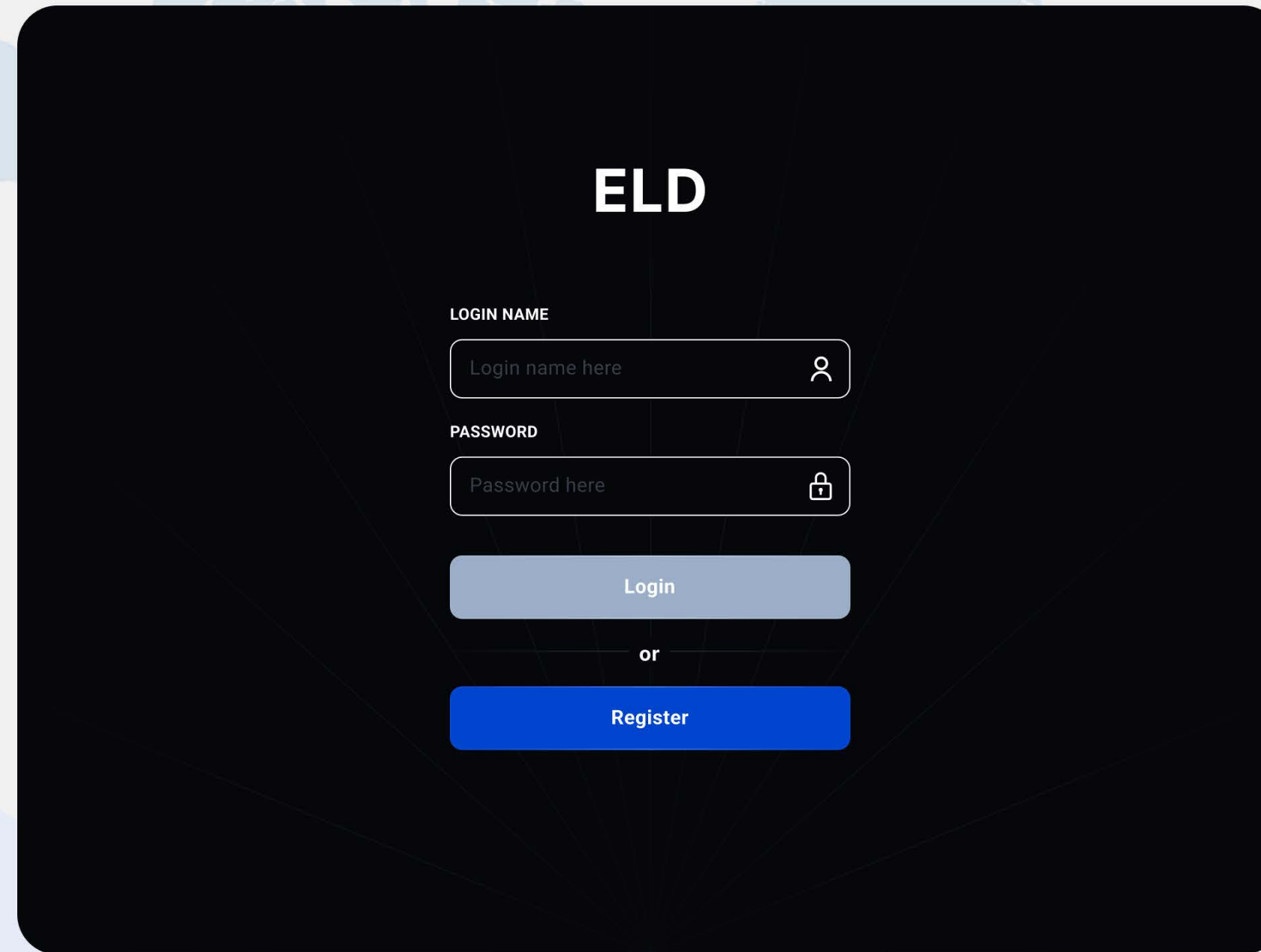
INSTALLING THE ONROAD ELD APP



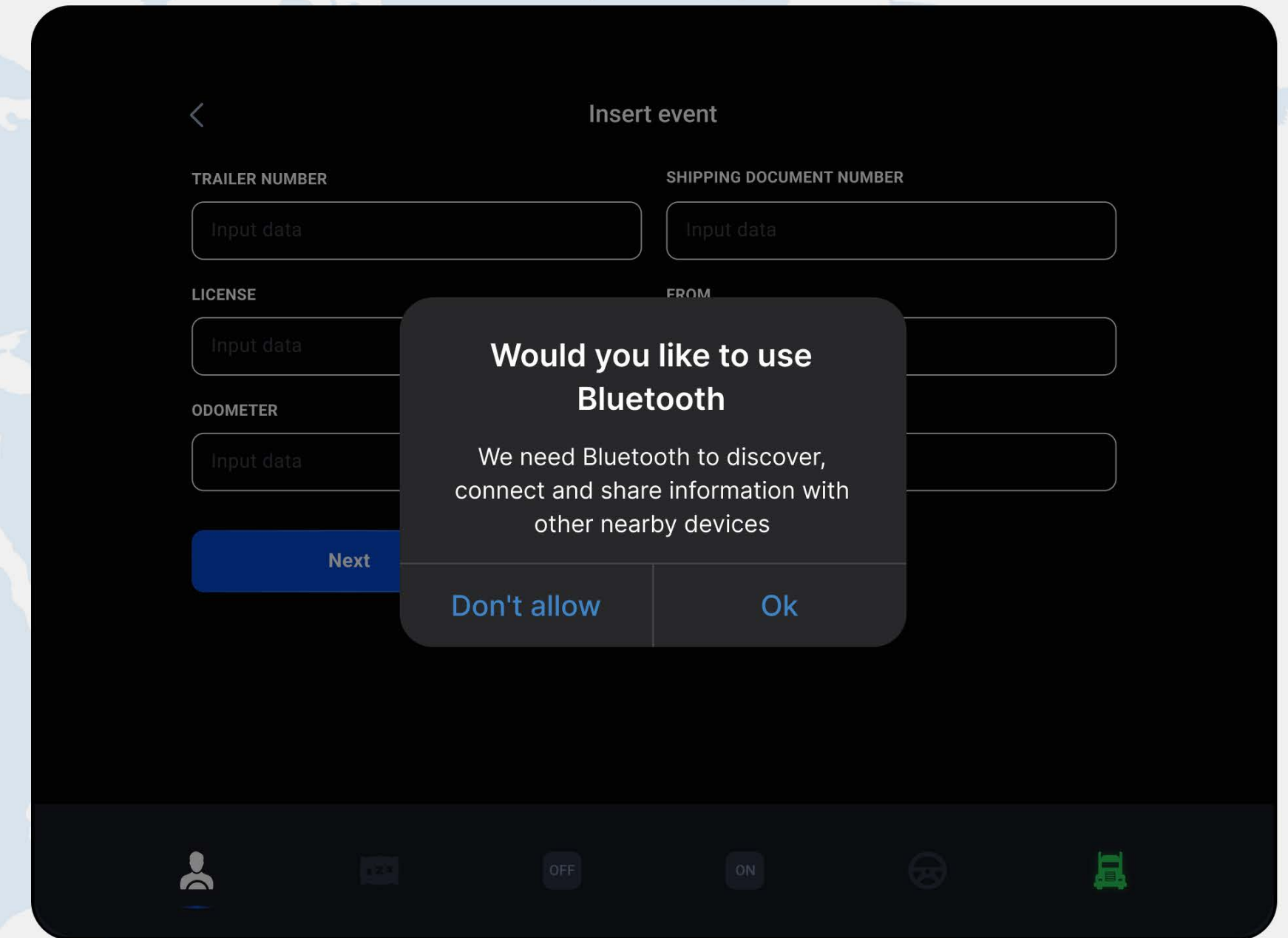
In order to install the app simply search Onroad ELD on [Google Play](#) or [App Store](#)



APPLICATION GUIDE



Log into the application with your credentials (**User Name and Password**). If you do not have, please contact your fleet manager



Turn on bluetooth on your device and connect Nearby Trucks in distance 15 meters

1ST PAGE

2ND PAGE

3RD PAGE

4TH PAGE

5TH PAGE

6TH PAGE

7TH PAGE

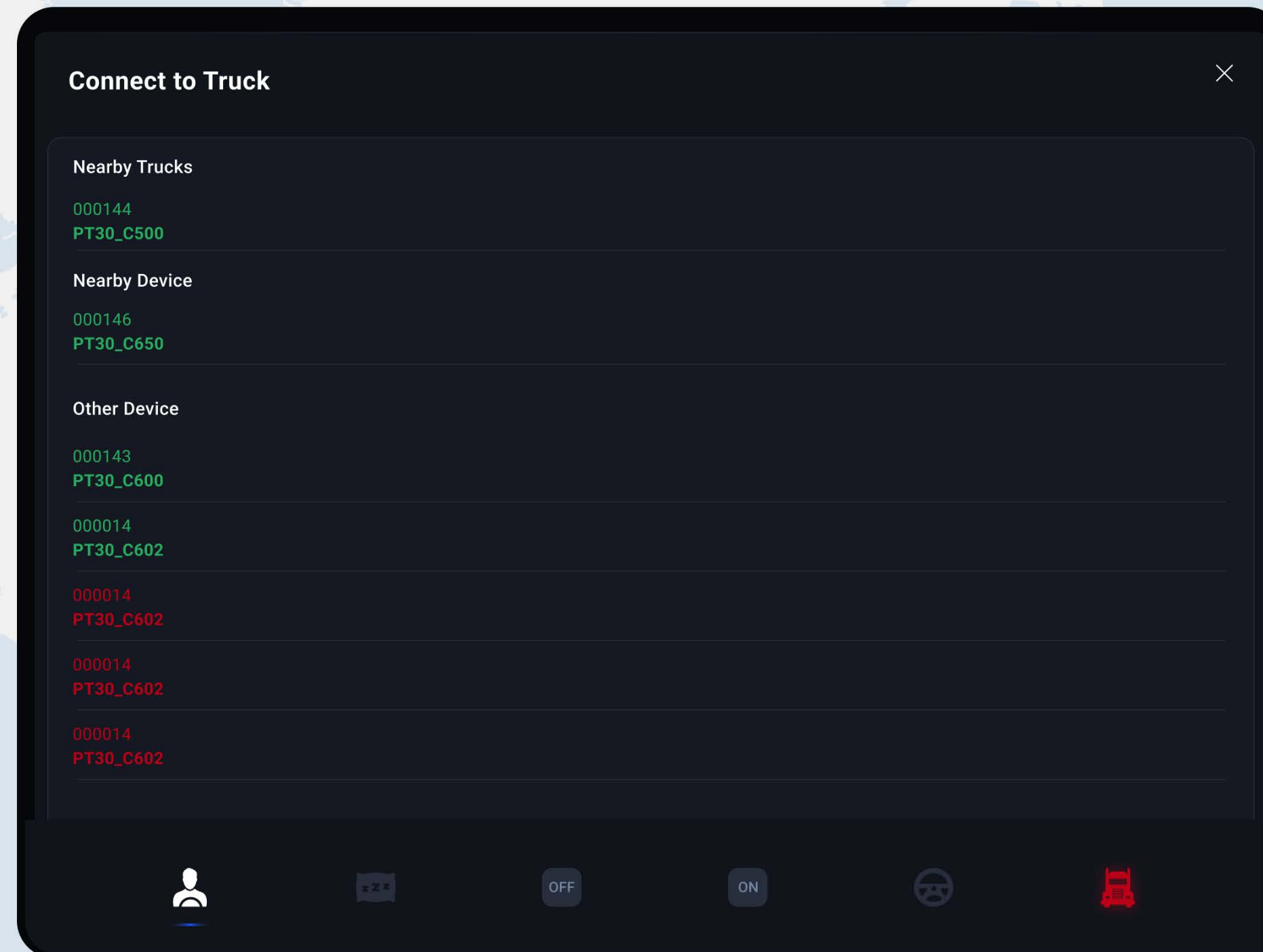
8TH PAGE

9TH PAGE

10TH PAGE

11TH PAGE

APPLICATION GUIDE



In order to use Onroad ELD (device and the application), you would need to connect the PT30 to your truck via the wire, turn on the ignition.

1ST PAGE

2ND PAGE

3RD PAGE

4TH PAGE

5TH PAGE

6TH PAGE

7TH PAGE

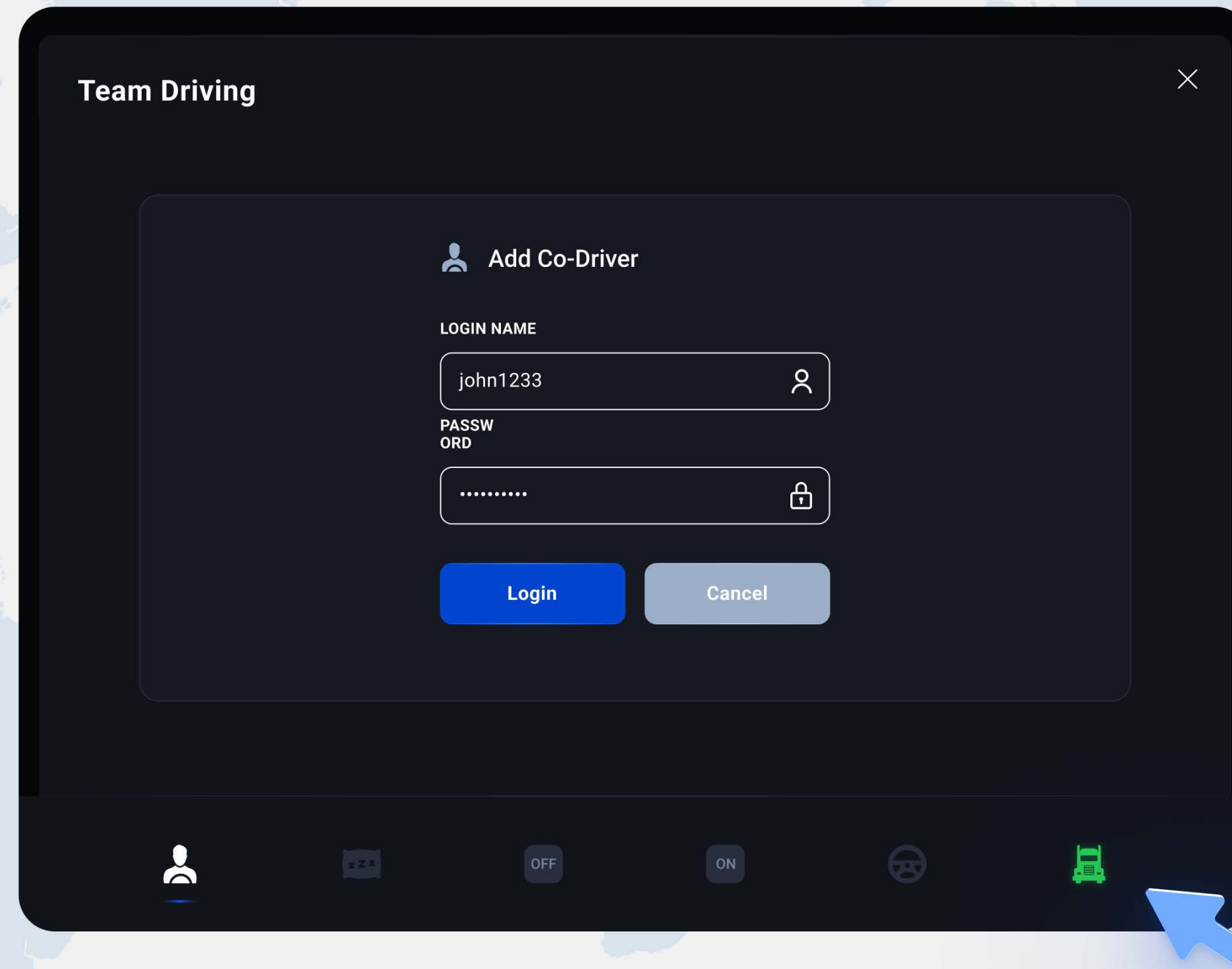
8TH PAGE

9TH PAGE

10TH PAGE

11TH PAGE

APPLICATION GUIDE



If the ELD is connected to vehicle driver can see green icon on the right side of dashboard. Optional Team driving by adding Co-Driver using credentials.

USING ELD ON THE ROAD



Your driving time automatically recorded. When vehicle begins moving, duty status will automatically be set to “Driving”. At 5 mph (or more) the vehicle is considered to “Driving” and “On Duty”.

1ST PAGE

2ND PAGE

3RD PAGE

4TH PAGE

5TH PAGE

6TH PAGE

7TH PAGE

8TH PAGE

9TH PAGE

10TH PAGE

11TH PAGE

USING ELD ON THE ROAD



From the statuses in the main window, select "SB", "Off", "On", or "Driving" depending on your situation.

1ST PAGE

2ND PAGE

3RD PAGE

4TH PAGE

5TH PAGE

6TH PAGE

7TH PAGE

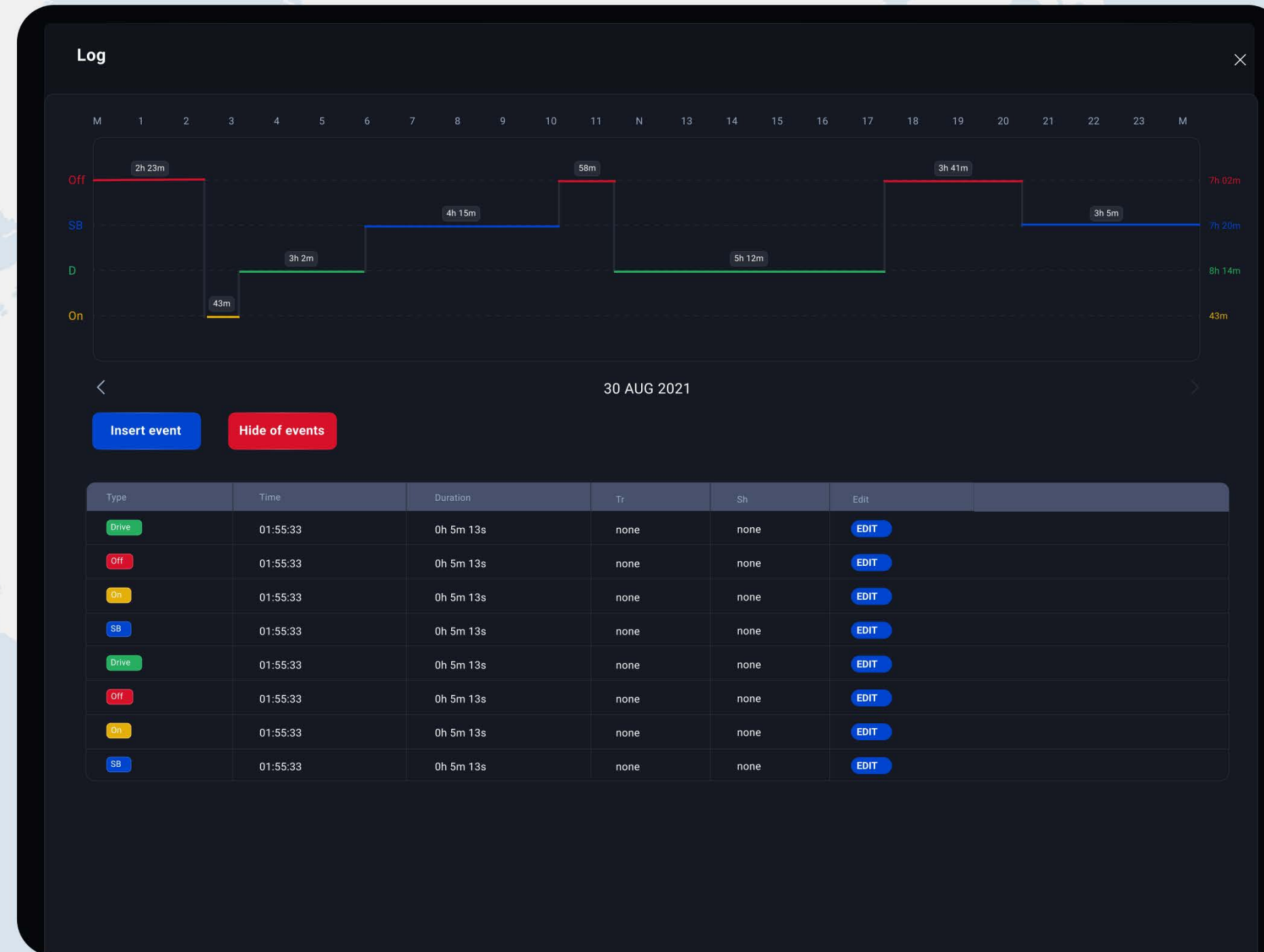
8TH PAGE

9TH PAGE

10TH PAGE

11TH PAGE

OFFICER INSPECTION



It's easy to provide on officer with your driving information.
Here you can check list of events in 8 days.

1ST PAGE

2ND PAGE

3RD PAGE

4TH PAGE

5TH PAGE

6TH PAGE

7TH PAGE

8TH PAGE

9TH PAGE

10TH PAGE

11TH PAGE

RECORDS CERTIFICATION

Records Certification

You can select and certify all days in list below:

- 27-Jul-2021
- 28-Jul-2021
- 29-Jul-2021
- 30-Jul-2021
- 31-Jul-2021
- 01-Aug-2021
- 02-Aug-2021

Certify records

I hereby certify that my data entries and my record of duty status for 24-hour period are true and correct.

Agree

Not agree

Certify all selected Cancel

You can select and certify all days in list below before sending DOT Inspection.

1ST PAGE

2ND PAGE

3RD PAGE

4TH PAGE

5TH PAGE

6TH PAGE

7TH PAGE

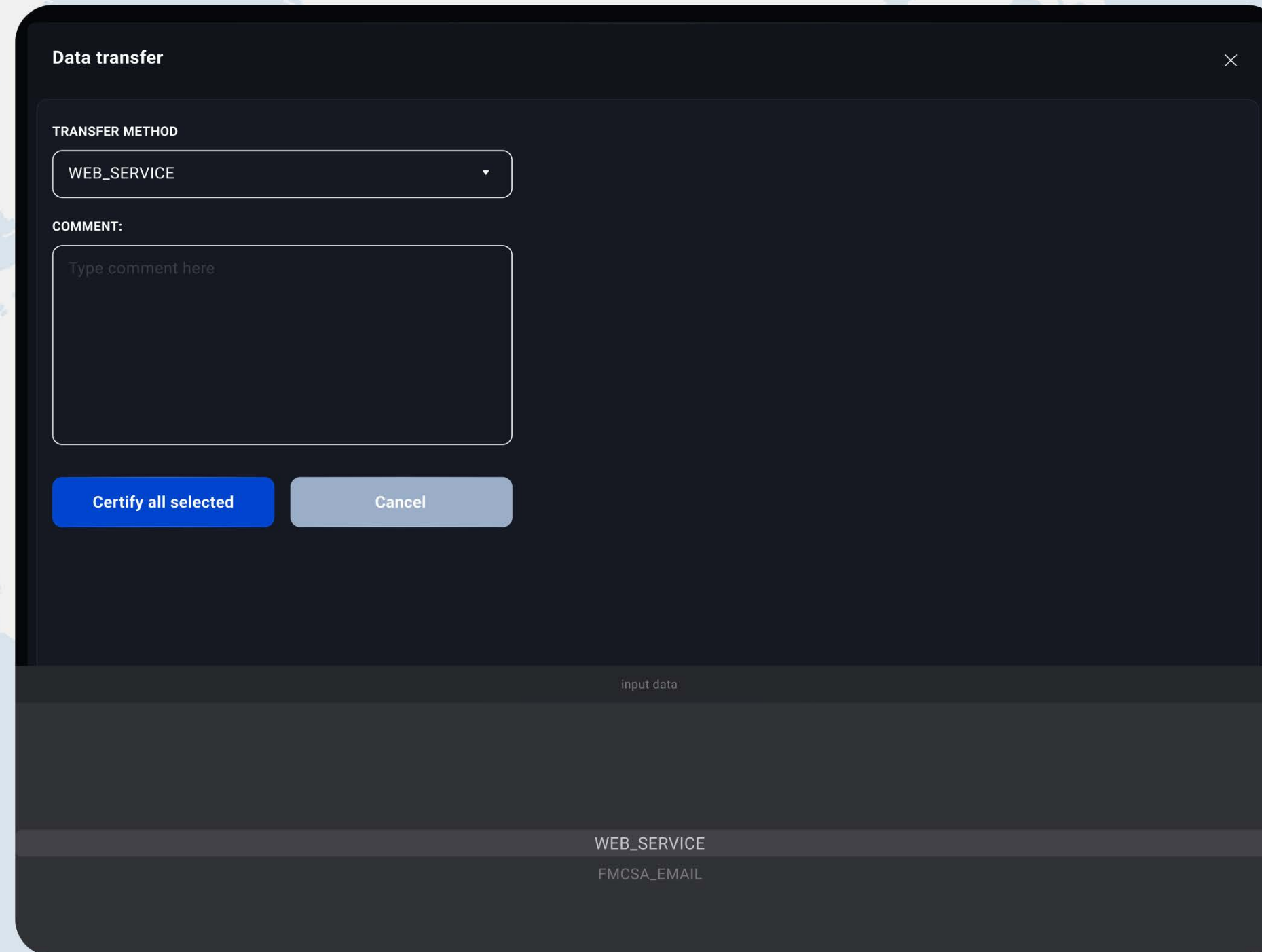
8TH PAGE

9TH PAGE

10TH PAGE

11TH PAGE

DOT INSPECTION



The screenshot shows a dark-themed dialog box titled "Data transfer" with a close button (X) in the top right corner. It contains a "TRANSFER METHOD" dropdown menu currently set to "WEB_SERVICE". Below this is a "COMMENT:" section with a text input field containing the placeholder "Type comment here". At the bottom of the dialog are two buttons: "Certify all selected" (highlighted in blue) and "Cancel". Below the dialog, a table shows the selected method and its corresponding email address.

input data
WEB_SERVICE
FMCSA_EMAIL

Clicking on DOT Inspect on the middle of dashboard you transfer the data by choosing WEB_SERVICE or FMCSA-EMAIL transfer method. Send your electronic logbook 8- day summary to the officer.

MENU BAR

1ST PAGE

2ND PAGE

3RD PAGE

4TH PAGE

5TH PAGE

6TH PAGE

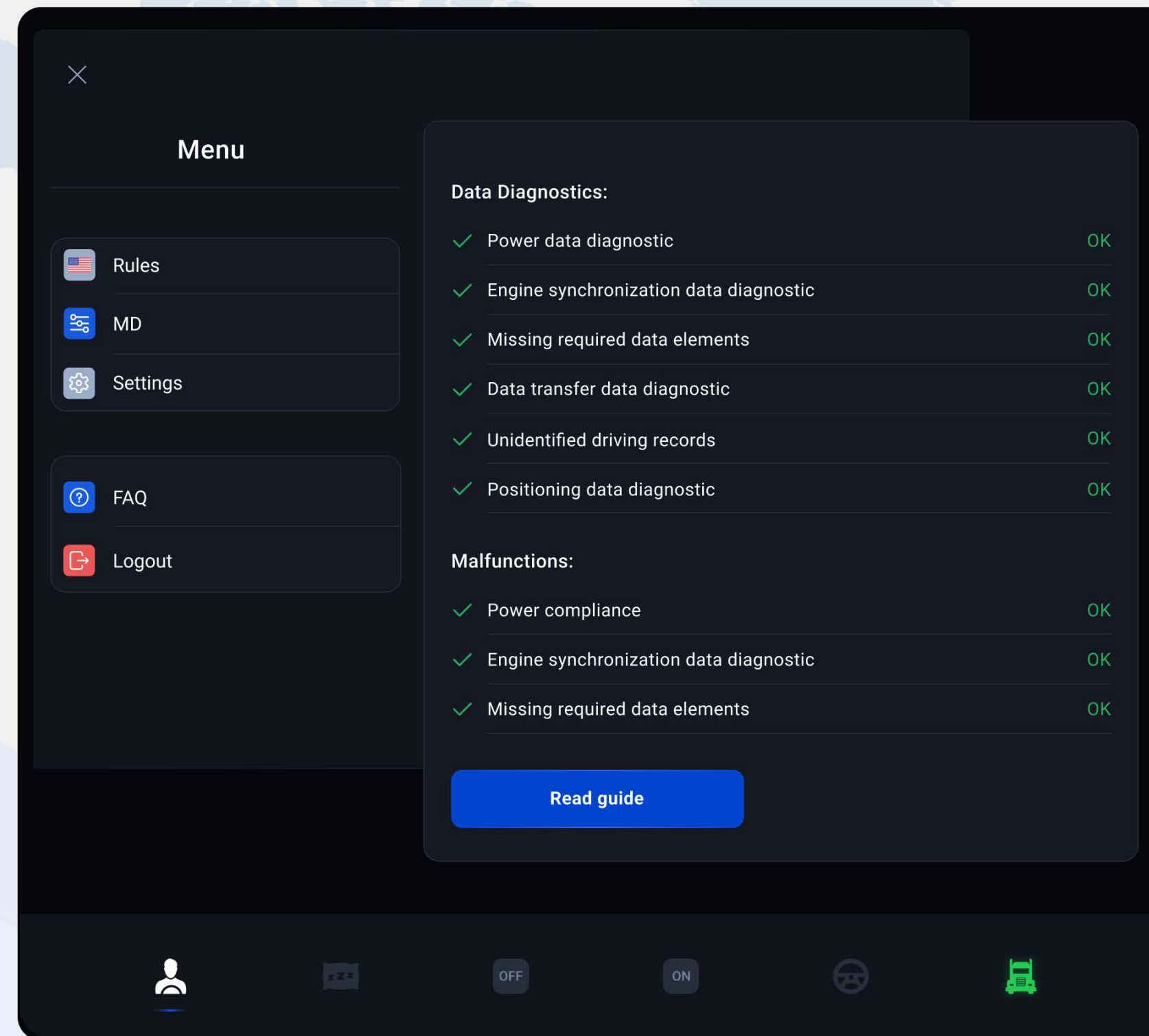
7TH PAGE

8TH PAGE

9TH PAGE

10TH PAGE

11TH PAGE



1. Rules - ELD Rules

2. MD - Malfunctions and Data Diagnostics

3. FAQ - Frequently Asked Questions

4. Logout

ELD MALFUNCTIONS

395.22 Motor carrier Responsibilities

A motor carrier must ensure that its drivers possess onboard a commercial motor vehicle and ELD information packet containing the following items: An instruction sheet for the driver describing ELD malfunction reporting requirements and recordkeeping procedures during ELD malfunctions.

The following instructions are in accordance with the guidelines set forth in 395-34

ELD will monitor and report malfunction data base on section 4.6 ELD's Self Monitoring of Required Functions table 4:

P – “Power compliance” malfunction,

E – “Engine synchronization compliance” malfunction,

T – “Timing compliance” malfunction,

L – “Positioning compliance” malfunction,

R – “Data recording compliance” malfunction,

S – “Data transfer compliance” malfunction,

O – “Other” ELD detected malfunction.